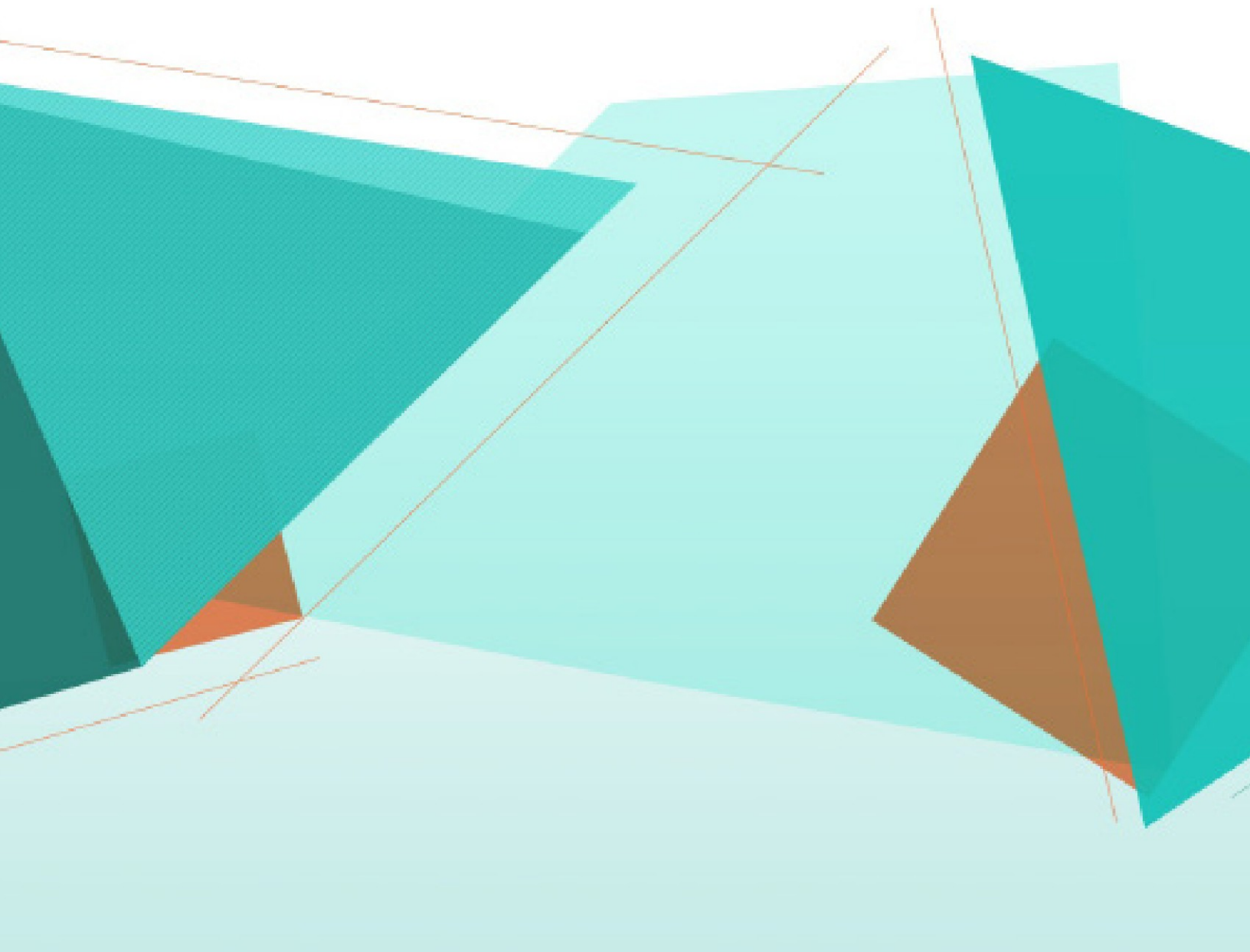


# Kodak

## Info Input Solution

Release Notes



# Contents

New Features / Enhancements .....	1
Fixed Issues .....	10
Known Issues .....	23
Patch Deployment Instructions .....	24
System & Environment Requirements .....	26

# 1 New Features / Enhancements

Info Input Solution is a web-based scanning software solution that enables users to scan documents from any remote location and deliver the captured information to an Enterprise Content Management system, for storage or further processing.

New features in Info Input Solution v6.3.19:

HTML Client:

- The Date Picker used in the Batch Manager and the Task filters will now format dates according to the system's locale

Export Service:

- Images Export: The **SharedObject** is not correctly set when exporting each page separately
- Salesforce: Added the ability to evaluate system variables at the page level
- SharePoint Online: Added the ability to evaluate system variables at the page level
- SharePoint Server: Added the ability to evaluate system variables at the page level
- OpenText Content Server: Added the ability to evaluate system variables at the page level
- OpenText Documentum REST: Added the ability to evaluate system variables at the page level
- OpenText Documentum DFC: Added the ability to evaluate system variables at the page level
- Dropbox: Added the ability to evaluate system variables at the page level
- Box: Added the ability to evaluate system variables at the page level
- OpenText Application Content Management: Added the ability to evaluate system variables at the page level
- IBM Content Manager: Added the ability to evaluate system variables at the page level
- IBM FileNet P8: Added the ability to evaluate system variables at the page level
- Nuance Export: Added all the Nuance-related errors to the tolerance logic for creating single-page image PDFs when the OCR fails

Extraction / Intelligent OCR:

- Removed the minimum accepted rotation limit for all the OCR engines
- Microsoft Document Intelligence: Enhanced the Invoice pre-built model to always retrieve the key-value pairs

Barcode Detection:

- Windows engine: Added the **Code11 checksum**, **Code39 checksum**, **Code93 checksum**, and **Inter2of5 checksum** options in the Advanced configuration dialog

New features in Info Input Solution v6.3.17:

Scan / Import:

- Make scan profile settings initialization more robust in case switches between a scan profile, whose scanner is not connected to the workstation, and a scan profile whose scanner is connected, occur

#### Export Service:

- Salesforce Export: Increased the file size limit for the uploaded files

#### Extraction / Intelligent OCR:

- Hyperscience: Updated the accepted image rotation threshold to unlimited

#### New features in Info Input Solution v6.3.16:

##### HTML Client:

- Introduced the `scanapp.client.html.default_imageviewer_size` Server Configuration parameter that will dictate the default View Mode of the Image Viewers. Accepted values are `fitPage`, `fitWidth`, and `actualSize`
- The scan profiles won't be loaded when the batch is opened for Indexing

##### Core Service:

- Introduced the `imaginio` server property that will dictate the method that the Application will use to write files to the file system
- Introduced the `filesystem-performance-test.bat` (Windows) and `filesystem-performance-test.sh` (Linux) files under the tools directory, to perform tests in the file system and select the most efficient method for the `imaginio` property

##### HTML Service:

- Introduced the `imaginio` server property that will dictate the method that the Application will use to write files to the file system

##### Import Service:

- Email Import: implemented an upper limit to the number of emails loaded at a time, to avoid memory loads
- Enhanced the Import mechanism with safeguards so the service can recover after errors
- Introduced the `imaginio` server property that will dictate the method that the Application will use to write files to the file system

##### Export Service:

- Salesforce Export: Added the ability to provide the exported object as an output parameter to be used by a following export configuration
- Introduced the `imaginio` server property that will dictate the method that the Application will use to write files to the file system

##### Extraction / Intelligent OCR:

- The ExtractionData object will contain the `\n` special character at the end of each line, so it can be used to break lines in custom scripting
- When the Image Registration fails, a warning message will always be displayed in the Client and all the fields will be set for review

#### Image Enhancement:

- Added additional options in the Resize Image operation

#### New features in Info Input Solution v6.3.15:

##### Export Service:

- SharePoint Server: Added support for the Content Type elements
- SharePoint Server: Added support for the Managed Metadata column type

##### Classification:

- Added the ability to use a Patch Code profile for Feature Classification

#### New features in Info Input Solution v6.3.14:

##### Export Service:

- SharePoint Online: Provide the exported file's shared link as an output parameter
- Documentum DFC: Upgraded the DFC libraries to the latest 22.4 version

#### New features in Info Input Solution v6.3.13:

##### HTML Client:

- Driverless Scanning: Enhanced the Web scanning configuration dialog with new options, based on the provided options by the firmware

##### Job Setup:

- Added the PostgreSQL Connection URL template in the *New Data Source* window

#### Image Enhancements:

- Added the ability to set a custom DPI value in the Resize Image Operation
- Introduced the **Rotation** Image Operation that allows rotation for 90 degrees right/left and 180 degrees

#### New features in Info Input Solution v6.3.12:

##### Core Service:

- Batch Cleanup: Introduced the **batch.folder.deletion.threshold.min** Server Configuration parameter as a threshold for the orphan folders that will be deleted

##### Export Service:

- FileNet P8: Added the ability to dynamically create folders to FileNet during export
- FileNet P8: Changed the release mechanism when uploading FileNet content elements

#### Extraction / Intelligent OCR:

- Introduced a check mechanism for the synchronous tasks that are canceled when processing with Google Document AI and Microsoft Form Recognizer engines
- Microsoft Form Recognizer: Added new pre-defined fields for the Invoice parser

#### New features in Info Input Solution v6.3.11:

##### Scan / Import:

- Images with more than 32bpp will be converted to 24bpp when imported

##### Export Service:

- FileNet P8: Added the ability to create folders dynamically during export
- FileNet P8: Added the ability to export documents with multiple FileNet content elements

##### Authentication Service:

- Added check that validates the application.yml file before the Authentication Service starts

#### New features in Info Input Solution v6.3.10:

##### HTML Client:

- Added a new option to the *Open*, *Select Next Indexing task*, and *Batch Manager* windows, to copy all the rows to Clipboard

##### Authentication Service:

- Added a soft timeout parameter to end the session with the Authentication provider within a specified amount of time

##### Thick Client / HTML Client:

- Added the ability to change the format of the *created*, *locked on*, and *custom date fields* in the *Batch Manager*, *Open*, and *Select Next Indexing task* windows. Introduced the following Server Configuration parameters to configure these changes:

`scanapp.client.node_createddate_format`  
`scanapp.client.node_lockeddate_format`  
`scanapp.client.node_customdate1_format`  
`scanapp.client.node_customdate2_format`  
`scanapp.client.node_customdate3_format`

#### New features in Info Input Solution v6.3.9:

##### Export Service:

- Images Export: Added the PDF/A-1a, PDF/A-2a, and PDF/A-3a as options to the File Format configuration
- SharePoint Online: Added support for the Managed Metadata/ Taxonomy column types

- OpenText File360: Implemented new logic to retain the folder structure of the exported documents. This functionality can only be achieved when the export is configured at the Document Class

#### Batch Manager:

- Implemented a Filter functionality, similar to the one already existed in the *Open* and *Select Next Indexing Task* windows
- Added a max-rows option to limit the number of the displayed results

#### HTML Client:

- When copying row data from the *Open*, *Select Next Indexing Task*, or *Batch Manager* windows, tab characters will be added between each column, so the results can be inserted to different cells when pasted in an Excel sheet

#### Extraction / Intelligent OCR:

- Microsoft Form Recognizer: Changed the label of the Document OCR model from *OCR* to *OCR Read*

#### New features in Info Input Solution v6.3.8:

##### Export Service:

- FileNet P8: Added the option to delete the output images when the export is successfully finished
- FileNet P8: Added two new options in the configuration GUI for the **Connect Timeout** and the **Read Timeout** properties
- SharePoint Online: Added support for the Microsoft Content Types

##### Database:

- Optimized the query that saves the document statistics in the database
- Added an Index in the **StatsNodeSessions** table
- Upgraded the PostgreSQL libraries to the latest 42.6.0 version

#### New features in Info Input Solution v6.3.6:

##### Import Service:

- The validation check for eSigned PDFs will be disabled by default

##### Task Filtering:

- Enhanced the **IBatchFilter** object to use custom SQL clause. Detailed explanation can be found in the Developer's Guide
- Added the Batch Mode as an option in all filters

##### Export Service:

- Box Export: Optimized the file and folder path discovery during export
- Documentum DFC: Upgraded the DFC libraries to version 22.2

#### Extraction / Intelligent OCR:

- Amazon Textract: Added support for invoice extraction in multi-page documents

New features in Info Input Solution v6.3.5:

HTML Client:

- Documentum DFCRPC: Enhanced the plugin to also work at the HTML Client
- Scanner Imprinter: Added the ability to enable/disable the imprinting functionality for each scan profile
- Home Screen Tab: Added the `collapsedGroups` parameter as the returned value for the `getHomeMenuItems` function of the Global Script. This parameter will decide which Home Screen items will be collapsed (or not) by default
- Home Screen Tab: The grid columns customization is only preserved for Administrative Users

Extraction / Intelligent OCR:

- Hyperscience: The page rotation limit is changed to unlimited
- Microsoft Form Recognizer: Added support for Table Extraction in the Azure Custom Models

Export Service:

- OpenText File360: Added the ability to modify the `batchname` of the output path
- Box Export: Optimized the folder patch discovery mechanism for better performance

Database:

- Modified index on Nodes table to use priority on descending order, to optimize the performance

API / Scripting:

- Introduced the methods `setImageWidth` and `setImageHeight` in the public API for the `IPage` interface

Barcode Detection:

- Linux: Upgraded the BarDecode engine to the latest 9.2.2 version

New features in Info Input Solution v6.3.4:

Thick Client:

- Added the *Apply* and *Save and Close* buttons to the Global Script scripting editor

HTML Client:

- Introduced the new Home Screen View feature. The `scannapp.client.html.homeview_enabled` server configuration parameter has been added, to enable / disable this feature
- Added the `scannapp.client.html.default_browser_context_menu_indexing` server configuration parameter to enable/disable the context menu that is opened when the right-click is pressed on an Index field

Licensing:

- Added the page count limit property in the Licensing Administration window

API / Scripting:



- Added the `getHomeMenuItems` and `getGridCustomizationsFunction` in the Global Script that allows the Home Screen items customization

#### Application:

- Added system level custom fields applicable for all nodes. Detailed documentation can be found at the jsdoc and javadoc

#### Batch Manager:

- Added the ability to promote a batch to use the latest published version of its Job

#### New features in Info Input Solution v6.3.3:

##### API / Scripting:

- Added the ability to update a Task's (folder-document) priority through scripting, using the `getPriority` and `setPriority` methods

##### HTML-Client:

- The scan profile native window is blocked from opening when the batch is at an Index step

##### Export Service:

- Foxit Rendition: Added enhanced logging information and introduced a second file deletion attempt to avoid cases where the file is locked from a different transaction

#### New features in Info Input Solution v6.3.2:

##### HTML-Client:

- Get Next Indexing Tasks: The button *Close and get next waiting item* will fetch an item from the specific task queue that the currently opened item came from, in case of a customized Next Index Task configuration

##### Import Service:

- The Import Service polling logic will not wait for the polling period on the first cycle

##### API / Scripting:

- The function `endNodeIndexing` can now be used to handle promise responses
- The function `batchCreated` can now be used to handle promise responses

#### New features in Info Input Solution v6.3:

##### HTML-Client:

- Added support for the Imprinter Functionality with Pix Tools for Web
- Added the ability to customize the keyboard shortcuts globally for all users
- Added support for the Split Batch functionality

- Added the ability to apply custom Filters for the *Select Next Indexing task* and *Open* dialogs

#### Extraction / Intelligent OCR:

- Added support for the ABBYY Vantage OCR engine for OCR and Intelligent Document Processing (IDP)
- Added support for the Microsoft Form Recognizer Custom Models
- Upgraded to the latest Microsoft Recognizer dependency and added support for general forms parsing
- Added support to automatically map Table index fields with Table field results received from the OCR engines

#### Workflow:

- Added new functionality for Review/Rescan step
- Added support for the Google Document AI Splitter engine

#### Authentication:

- Added support for the modern authentication methods in the Thick Client
- Added the ability to extract the full user name when authenticating with Active Directory
- Added the ability to map multiple user accounts to a single login
- Modern Authentication: Added the ability to create custom error pages when the Authentication fails

#### Batch Manager:

- Added more granular permission for the Batch Manager
- Added additional Batch Manager customizations, globally define columns grouping, columns order
- Display the Tasks/Nodes Description in the Batch Manager columns
- Added the ability to open batches in read-only mode without locking them

#### Job Setup:

- Separated the rasterization options for PDFs and MS Office files
- Improved the way that the extraction profiles validates the username and password

#### Export Service:

- SharePoint Online: enhance the upload communication to use a transactional behavior
- File/Folder Move: enhanced the plugin with functionality to also delete the exported files

#### Import Service:

- Kodak INFuse: Added an option to leave the feedback message(s) that are sent to the scanner open
- Kodak INFuse: Added the ability to configure the initial *Batch Created* feedback message configurable per Job
- Kodak INFuse: Added the ability to send additional message(s) to the scanner based on the initial

processing performed

- Kodak INfuse: Added the ability to create/update an INfuse plugin from the configuration window
- Kodak INfuse: Added the ability to configure multiple INfuse import configurations for different Job Setups
- Kodak INfuse: Added a vertical scrollbar in the Configuration window

Thick Client:

- Added an explanatory description for every Server Configuration parameter

Databases:

- Improvements in Oracle DB utilization to enhance the performance

## 2 Fixed Issues

Fixed Issues in Info Input Solution v6.3.19:

Thick / HTML Client:

- When an Index step is branch, the Scan mode is not available

Thick Client:

- Custom node names: The Node names width is not adjusted automatically when the name is retrieved from a node property

HTML Client:

- It is possible for the Index mode to be disabled before the `setIndexMode` hook function is completed
- Error when trying to unreject descendant nodes
- Driverless Scanning: When the scanner runs out of paper, and the start button is pressed on the scanner, an error occurs, and the device gets locked
- A specific series of image operations causes an error
- The index field confidence indicators are lost when promoting a Job to the latest version and reopening it to the Client
- The sticky field property is not applied via scripting

Export Service:

- Nuance Export: Exporting searchable PDFs with Nuance fails when the *Auto-Detect from ALL languages* option is used
- Salesforce: The latest export plugin fails to authenticate
- Salesforce: The Salesforce export requires a pre-existing Images Export configuration while it shouldn't
- IBM FileNet P8: The index field values are not evaluated correctly in the Mapping table because of wrong syntax

Extraction / Intelligent OCR:

- The `Illegal bounding box` error occurs during extraction with Nuance, as a result of a bad Image Registration
- Azure AI Document Intelligence: Corrected some differences in the OCR results between the two Clients, when using a Custom Model
- Nuance OCR: When an index zone encloses the whole page, the OCR fails with the `Nuance error - 2147170039: ZONE_SIZE_ERR` error

Classification:

- The default Form Type in a Classification project is not retained when exporting/importing a Job Setup

Image Enhancements:

- When multiple images are processed simultaneously at the Test dialog, they lead to an `Invalid memory access` error
- The canvas color for the *Enlarge Canvas* Image operation is not saved to the Database

#### Fixed Issues in Info Input Solution v6.3.18:

##### HTML Client:

- Fixed some issues during Indexing that were caused by the `customizeAvailableTypes` hook function being modified
- Driverless: When scanning is completed and trying to rescan a new set of pages, the `Failed to parse response error` occurs

##### Core Service:

- Fixed an issue during image upload to the server, when the images folder is on an SMB drive

##### Import Service:

- Batches are moved to the `Failed` folder even if the batch was successfully created, when a specific error occurs during import
- PDFs that contain nested XForm objects fail to be rasterized and imported

##### Extraction / Intelligent OCR:

- Microsoft Vision: Some batches fail to be processed in an Extraction step when the index zone encloses the whole page, too close to the edges

#### Fixed Issues in Info Input Solution v6.3.17:

##### HTML Client:

- Fixed an issue where a Database action was executed before all the Application components are loaded and caused the Batch Manager to hang
- Advanced Indexing Forms: If an image is added in the designer with no index fields, it is not displayed during runtime

##### Core Service:

- If a batch is created within 10 seconds from a Job publish, it causes the batch to not be uploaded to the server

##### Extraction / Intelligent OCR:

- Hyperscience: A batch fails with `java.lang.IndexOutOfBoundsException: Index: 0, Size: 0` error when some of the retrieved information do not have character positions declared
- When a Transformation Script in the Intelligent OCR mappings is commented out, the field value is not returned
- Nuance OCR: When an index zone encloses the whole page, the OCR fails with the `Nuance error - 2147170039: ZONE_SIZE_ERR` error
- Amazon Textract: The OMR functionality was not working correctly
- Amazon Textract: the Amazon engine gets tagged as initialized even if the SQS Client fails to register
- Azure AI Document Intelligence: Currency fields return the null string next to their value when using the

pre-built Invoice model

Fixed Issues in Info Input Solution v6.3.16:

Thick / HTML Client:

- Specific PDFs that contain XML attachments failed to be rasterized as images

Thick Client:

- Some Chinese or Japanese characters are not displayed correctly in the document headers

HTML Client:

- Fixed a synchronization issue where the `pageArrived` hook function was executed before the barcode detection
- The `ScanSingleAndInsert` operation may delete all the pages after the one selected, when the browser is extremely slowed down
- Added the exact Application version in the login window
- The image DPI is changed after adding an annotation
- The `detectBlank` method was not working correctly when the batch was scanned using the HTML Client
- The `query was canceled by another thread` error occurs when discarding a batch and moving back to the Home Screen and the items list is too big
- The load hook function does not catch scripting errors
- Task Filtering: The filters are not working when the `scanapp.client.persist_batch_filter` Server configuration parameter is set to false
- Batch Manager: When grouping by the created date, the group does not display any header
- Batch Manager: The User is allowed to set a value bigger than 10 seconds for the auto-refresh feature
- Batch Manager: When using the keyboard arrows the system only allows to move one entry up or down
- The `allow_same_user_logins` Server Configuration parameter is not properly recognized
- Advanced Indexing Forms: when the focus is moved to an index field, its text is not entirely selected

Export Service:

- A batch may get stuck at a Processing state for a long time on rare occasions
- SharePoint Export: when the exported batches contain required column(s), the files are uploaded in checked out mode
- OpenText File360: the File360 server starts polling batches before the export is successfully completed
- OpenText File360: the files are exported with incorrect order
- OpenText File360: the folder structure is incorrect during export
- OpenText File360: Fixed an issue where a checkbox in the GUI was not correctly aligned to the field next to it
- Box Export: Error when importing the private key for authentication

#### Import Service:

- Import Administration GUI: The browsing buttons are missing from the Kodak INFuse import configuration
- XML Import: When the batch priority is not defined in the XML file, the default priority is not assigned

#### Job Setup:

- The Document Classes associated with a Job may get unselected when the Filter is used

#### Security:

- Users are unable to open a batch at a Scan step unless they have the **CreateBatch** permission
- When an Administrator changes a User's password, it doesn't get updated

#### Image Enhancement:

- Testing some heavy Image operations in the 32-bit Thick Client may cause an **OutOfMemory** error

#### Extraction / Intelligent OCR:

- ABBYY Vantage: if the Intelligent OCR profile does not return any OCR entities, an error occurs during processing

#### Fixed Issues in Info Input Solution v6.3.15:

##### HTML Client:

- When marking an index field as invalid (or for review) through scripting, the Document node in the Batch tree is not turned red
- The multi-line text annotations may move outside of the defined borders after they are saved, if Enter is used to change line
- Driverless Scanning: After a Paper Jam in the scanner, a **405 (Method Not Allowed)** error occurs
- Security vulnerability: an authenticated malicious user can gain access to data and images of other batches without proper authorization by hand-crafting direct http requests to the server
- Drop-down lists cannot be clicked again to re-open their options once they are selected
- Specific multi-tiff image fails to be imported to the Core Service

##### Export Service:

- Images Export: In the Auto-Annotation feature, the system variables are now evaluated at the page level instead of the document level. If any document-level variables were used, they need to be changed after the patch update for the functionality to remain the same  
For example, the **#{ID}** variable would refer to the Document ID before the patch update and to the Page ID after the upgrade. To keep the functionality the same, the **#{DocumentID}** variable must be used

##### Intelligent OCR / Extraction:

- Google Document OCR: The process fails in an Intelligent OCR step if the extraction profile is created from the OCR category in the Job Setup

#### Fixed Issues in Info Input Solution v6.3.14:

##### HTML Client:

- The `page.getImageColorMode` function returns wrong results when used in a specific type of vector PDF
- Driverless Scanning: The scanning stops with a 405 error code when scanning with a large amount of pages and the barcode detection is enabled

##### Job Setup:

- The Minimum Confidence value in an Extraction index zone, is set back to default when editing the Extraction profile and closing it again
- Cannot import specific Job Setups if they reference an object that is deleted from the configuration

##### Image Enhancements:

- Auto rotation: When low DPI and orientation cannot be determined, an error is thrown and is propagated to the engine
- Auto rotation: The auto rotation image operation fails for specific images

#### Fixed Issues in Info Input Solution v6.3.13:

##### Job Setup:

- The Oracle Connection URL template in the *New Data Source* window is not correct

##### Core Service:

- On some rare occasions, the batch cleanup mechanism fails to delete some orphan nodes

##### HTML Client:

- Driverless Scanning: The scanning stops with a 405 error code when scanning with a large amount of pages

##### Export Service:

- Database Export: An error occurs during export when calling a Stored Procedure against a PostgreSQL database

#### Fixed Issues in Info Input Solution v6.3.12:

##### HTML Client:

- The `maximum call stack exceeded` error occurs when navigating through nodes with multiple children, using the keyboard
- An index Field gets overwritten with different OCR data after focusing on a different document on some rare occasions

##### Scan / Import:



- A PDF that contains images on 32 bpp with alpha channel fails to be imported using the Thick Client or the Import Service

#### Extraction / Intelligent OCR:

- The OCR data produced in an Intelligent OCR step are not copied to the duplicated documents when the duplication takes place in a Server-side step

#### Authentication Service:

- The Thick Client is not launched in the first attempt when using the authentication service URL. For the SAML IdP initiated flow, the parameter `?client-url=/saml` must be appended to the Redirection URL

#### Core Service:

- On some rare occasions, when the `splitBatch` operation on a server-side Script step is synced with the orphan Folder cleanup operation, the batch folders of the newly split batches get deleted along with the source images

#### Fixed Issues in Info Input Solution v6.3.11:

##### Intelligent OCR / Extraction:

- Azure Form Recognizer: added a max timeout duration of 5 minutes when sending documents with 3 pages or less to Microsoft
- Azure Form Recognizer: a `NullPointerException` error is produced with the pre-built invoice parser on some rare occasions

##### Image Enhancements:

- Incorrect deskew causes specific images to fail in the Auto-rotate Image operation

##### HTML Client:

- It is possible to invoke barcode detection before the scanned image is successfully uploaded

#### Fixed Issues in Info Input Solution v6.3.10:

##### HTML Client:

- Home Tab: After opening and closing a batch from the Batch Manager, the Browse screen is displayed instead of the Home Screen
- Images with no DPI information fail to be imported
- The `Despeckle`, `FillPunchHoles`, and `FlipPage` enums are not passed as parameters in the `isContextActionEnabled` hook function of the Job Script
- Advanced Indexing Forms: The `fieldFocusLost` hook function is not executed when tabbing out from an index field, if the next item is a custom component, such as a button
- Advanced Indexing Forms: The *Help Tip* tooltip is not displayed when hovering the mouse over an index field
- When trying to save an eDoc with a non-Latin filename, the output filename is wrong

- The dropdown selections do not close with a second mouse click

#### Intelligent OCR / Extraction:

- Microsoft Form Recognizer: The Address fields fail to be extracted using the pre-built Invoice parser
- Extraction: The batch will not move to permanent error even if the volume license tokens are depleted
- Microsoft Form Recognizer: Specific invoices fail with **Null PointerException** due to empty table fields returned from the Microsoft engine
- Microsoft Form Recognizer: Extraction fails with **NullPointerException** if the Extraction profile is created from the Intelligent OCR category in the Job Setup

#### Batch Manager:

- The *Change Step* action is not allowed if the batch is in Processing state

#### Export Service:

- Images Export: The compression that is configured in the Job Setup, is not applied during export, when a tiff image is imported with LZW compression

#### Core Service:

- Batches with higher priority are processed after up to be processed first in a Server-side Script step

#### Fixed Issues in Info Input Solution v6.3.9:

##### Classification:

- The Classification designer was not using the same font that was defined for the rest of the Client
- Fixed typo errors in the Classification designer
- The **page.spl i tDocument** execution time linearly increases with the number of pages under the document

##### Core Service:

- The **Failed to load next task** error is displayed to the end user, when trying to *Submit and Get Next Indexing task*

##### HTML Client:

- The *Copy To Clipboard* action may overflow the browser's viewport
- When enabling the *Show only profiles appropriate for your scanner* option, the override options on the HTML Client local scan profiles are disabled
- When disabling the *Show only profiles appropriate for your scanner* option, the override options on the local scan profiles pop up menu, do not become available again
- The local scan profile override options are reset upon reopening the override options dialog on local scan profiles
- Task Filtering: The sorting list does not contain all the available options if the *Clear conditions and sorting options* button is pressed
- Task Filtering: Changed the label of the buttons Add/Remove/Replace to write *conditions* instead of filters
- Task Filtering: The 3rd sorting box still contains an option that is already selected in one of the two previous sorting boxes

- Advanced Indexing Forms: The Review icon is not displayed for multi-value index fields
- An eDoc file fails to be downloaded from the HTML Client, if it was previously imported from the Thick Client or the Import Service

#### Extraction / Intelligent OCR:

- The extraction fails with `FileNotFoundException` exception on random documents in large batches, if they are previously forked
- Microsoft Computer Vision: Fixed the deserialization error when doing OCR
- Intelligent OCR: The node properties are not changed from within the `onOCRError()` hook function

#### Export Service:

- The error `ClassNotFoundException` is displayed when trying to load an external library with the custom Class loader

#### Scan / Import:

- Specific tiff images are rotated 180 degrees upon imported to the Clients

#### Fixed Issues in Info Input Solution v6.3.8:

##### Extraction / Intelligent OCR:

- The `onOCRError` hook function of the Intelligent OCR Workflow step returns the Batch object as argument, instead of the Document or Page
- Microsoft Form Recognizer: The values extracted for ID cards are not always the same as the ones returned from the engine

##### HTML Client:

- Advanced Indexing Forms: The confidence indicator in Table cells cannot be removed even if the corresponding setting is disabled in the Job Setup configuration
- Home Screen: Dragging and dropping a column header in the UI causes it to disappear from the window
- The Folder Class selection dropdown list does not display the correct Folder Class names
- When navigating through the nodes in the Indexing panel, the wrong node may be displayed in the View, if the previous node contained hidden index fields
- A user is not able to copy the row data from the *Open*, *Select Next Indexing Task*, and *Batch Manager* windows

##### Export Service:

- Nuance: When creating Searchable PDF/A files using Nuance, the JPEG2000 Lossless compression type is not applied

##### Job Setup:

- A Job fails to be published with a `java.lang.NullPointerException: null` error message, when no Extraction profile is selected to be used inside an Intelligent OCR Workflow Step

#### Fixed Issues in Info Input Solution v6.3.7:

##### Job Setup:

- The error `org.hibernate.exception.ConstraintViolationException: could not execute batch` may show up when trying to save a Job Setup with a specific Job configuration

##### Task Filtering:

- In case the batch is opened from a Home Screen grid, the `Close and get Next Waiting item` button does not fetch a task from the same queue as the working batch

##### Workflow:

- Cannot open batches from Jobs that contain a Branching step

##### Extraction / Intelligent OCR:

- Microsoft Form Recognizer: The raw data JSON file received from the engine becomes very big in some cases

#### Fixed Issues in Info Input Solution v6.3.6:

##### Image Enhancements:

- Certain images failed during the `AutoRotate` or `Remove Black Border` image operations when trying to read information from the ICC profile

##### HTML Client:

- Home Screen: When the `getHomeMenuItems` function of the Global Script does not return any arguments, the error `Return value from getHomeMenuItems() is undefined` is displayed in the Browser console
- Home Screen: When a search in the Task list does not return any matched rows, a `Cannot read properties of undefined` exception occurs
- Task Filtering: The number fields accept alphanumeric string values
- Some of the advanced barcode settings are not applied in the HTML Client

##### Core Service:

- When multiple Clients try to lock the same task using the `Get Next Indexing Task` functionality, the `Error in getNextNode: scanserver.model.ScanServerException: Error while trying to lock process` error is produced

##### Task Filtering:

- The `Close and get Next Waiting item` button does not fetch a task from the same queue as the working batch

##### Extraction /Classification / Intelligent OCR:

- Microsoft Custom Models: The Intelligent OCR process fails when the `Save OCR` checkbox is not selected in the extraction profile
- Microsoft Custom Models: The Table extraction failed due to missing confidence value

- Nuance OCR: The Keyword Classification failed in cases where the keyword zone was close to the template image's edge
- Nuance OCR: Changed the confidence calculation for Zonal Extraction

#### Database:

- SQL Server: The *Get Next tasks* operation takes a long time to fetch items when there is a large amount of tasks in the queue.

#### Scan / Import:

- A specific type of container PDF fails to be rasterized during import
- If a PDF file fails to be rasterized during import, it is not imported as an eDOC
- Specific images from old Fax machines are stretched after import

#### Fixed Issues in Info Input Solution v6.3.5:

##### HTML Client:

- Home Screen Tab: The Search Bar inside the Home Screen does not work

##### Export Service:

- OpenText Content Server: The folder categories are not carried along the exported documents. on some rare occasions
- The Images Export output path may get changed if a change in the Release Destination is made while a batch is already in export processing

##### Scan / Import:

- The DPI information is changed if the imported image does not have the DPI encoded but it carries it in the EXIF data instead
- The password protected zip files fail to be imported

##### Classification:

- The Classification fails when an image smaller than the Feature Classification anchor area is used

##### Core Service:

- The custom jars are not loaded if they are placed under the extlib directory

##### Extraction / Intelligent OCR:

- Microsoft Form Recognizer: Batches are stuck in Processing state at the Intelligent OCR step

#### Fixed Issues in Info Input Solution v6.3.4:

##### HTML Client:

- Specific MS Excel files are falsely identified as zip files
- Specific validly signed PDFs are shown as invalid when imported in the HTML Client

#### Thick Client:

- Patch codes with large quiet zones fail to be recognized

#### Extraction / Intelligent OCR:

- Microsoft OCR: An extraction profile fails to be authenticated if the endpoint URL contains space characters at the end
- ABBYY Vantage: The core service tries to communicate with ABBYY indefinitely if a batch is deleted from the Batch Manager
- Hyperscience: A batch stays in Processing state forever, if the submission is deleted from Hyperscience before it's finished
- Hyperscience: Specific PDF documents will cause the process to fail with `scancommon.extract.OcrException: No segments in page` or `java.lang.NullPointerException` because they are identified as empty pages

#### Core Service:

- A `ConstraintViolationException` is produced when two different services try to delete the same stale session

#### Export Service:

- Box Export: Removed the Timeout parameter during export
- OpenText Content Server: The export takes too much time to finish if the output destination contains a very large number of nodes / business workspaces
- The export service will not increase the export attempts in case a configuration parameter is missing and this will cause it to try indefinitely
- Database Export: The export fails when a stored procedure contains more than 9 arguments

#### Database:

- The `could not advance using next()` error is produced when two Clients try to open the same batch at the same time, using the Get Next Indexing task functionality

#### Licensing:

- The Extraction tokens are consumed even in cases where no OCR/OMR takes place

#### Job Setup:

- When duplicating a Document class, a cluster index zone will no longer be associated to the index fields

#### Scan / Import:

- A specific kind of container PDF fails to be rasterized during import

#### Fixed Issues in Info Input Solution v6.3.3:

#### Extraction / Intelligent OCR:

- ABBYY: The expiration token is not updated automatically and causes the engine to become idle after a day
- ABBYY: The confidence indication is not displayed in some occasions

- ABBYY: The full-page OCR is not working correctly when an Intelligent extraction profile is used

#### Fixed Issues in Info Input Solution v6.3.2:

##### Core-Service:

- Inconsistent number of tasks is shown in the Select task to open and in Select task to index, when a server-side batch filtering is applied
- The Folder Cleanup mechanism will run always and not only when the `batch.age.threshold` is set

##### Fork / Join:

- When a task that was previously forked, is located on a step with custom Workflow permission(s), attempting to open the Batch Info dialog, produces the following error:  
`javax.persistence.PersistenceException: org.hibernate.exception.GenericJDBCException: could not execute query`
- A task that was previously forked, will remain in Ready state forever in an upcoming Fork step, if its structure is changed in the meantime

##### Authentication Service:

- The authentication will fail when the incoming payload is too big

##### HTML-Client:

- The error message `errorCode: 1, message: 'HTTP connection error'` will show up when dragging and dropping a folder into the Client
- The Action type `NewDocumentInFolder` is not called when the function `isContextActionEnabled` is triggered
- The Dialog *Close and get next batch to index* will show up before the function `endNodeIndexing` is triggered

##### Export-Service:

- CSV Export: the text qualifier is not applied in list index fields
- OpenText Content Server: Cannot export documents to folders under the Business Workspace object

##### Thick-Client:

- The indexing pane may not show up in case a specific configuration with default numeric values is used
- Job Configuration: the cursor focus is completely lost after a specific set of actions takes place
- Test Index zone dialog: When changing the OCR engine and re-running the results, the extraction is not running if the profile is not authenticated
- Test Index zone dialog: When changing the OCR engine and re-running the results, the Results sub-dialog is not paint correctly

Extraction / Intelligent OCR:

- Hyperscience: the error message `java.lang.NullPointerException: null` will show up when running with Intelligent OCR

Fixed Issues in Info Input Solution v6.3.1:

HTML- Client:

- A user with no *Delete-Batch Manager* permission can still delete a batch



## 3 Known Issues

Known issues in Info Input Solution v6.3:

Task Filtering:

- Get next task will be executed without any task filter, if the browser is refreshed.
- Next Task may run with a filter, even if a new batch was created using the new batch dialog.

Export Service:

- Images Export: The compression that is configured in the Job Setup, is not applied during export, when a tiff image is imported with LZW compression. Fixed in v.6.3.10.

Previously, when the source (originally imported) image was incompatible with JPEG compression (e.g. had transparency, 16bit channels, indexed, etc), and the Images Export output setting was TIFF with JPEG compression, the output compression would silently be changed to LZW to preserve as much as possible of the original information of the image. With this change, if the Images Export setting is TIFF with JPEG compression, the image will be converted appropriately to be JPEG-compressible to conform with selected settings, which means that some information (such as transparency) will be unavoidably lost during the conversion. For existing installations, if this is a problem and you wish to preserve maximum amount of original image information you need to explicitly specify TIFF with LZW compression in the Images Export output settings.

Please, make sure to test your Images export output settings to avoid long-term unwanted image storage loss of information.

## 4 Patch Deployment Instructions

The patch 6.3.19 is a cumulative patch and can be deployed on top of any 6.3.x patch level Application Server.

Steps for applying the patch:

a) Stop the application:

Windows: Use the Administration Utility (Services tab) to stop all running Windows Services, in the following order. Finally, close the Administration Utility window.

Linux: Stop the server-side processes, using the stop scripts or System V init-compatible scripts provided, in the following order.

1. Info Input Solution Import Server (if installed)
2. Info Input Solution Export (Release) Server
3. Info Input Solution Apache Tomcat Server

b) Take a backup copy of the installation directory, and a backup of the database.

c) Copy the patch distribution archive to the application server and extract the patch distribution archive to the installation directory. This step will overwrite some files and folders of the existing installation. When prompted, the user should confirm file (folder) replace.

d) Some library (jar) files have been updated to latest version with Cumulative Patch 17, so the old version of these files must be removed from the installation directories. When upgrading from a version earlier than 6.3.5, this step can be executed once after the final Patch is applied. We provide the libs-cleanup.bat file (for Windows) and libs-cleanup.sh (for Linux) under:  
    <root\_installation>\tools directory.

Windows environment: Open a new Command Prompt window with administrator permissions, change directory to <root\_installation>\tools, run the libs-cleanup.bat file and follow the steps to verify the deletion.

Linux environment: Change directory to <root\_installation>\tools, make sure the shell script file is executable (run `chmod +x libs-cleanup.sh`), run the cleanup file (`./libs-cleanup.sh`) and follow the steps to verify the deletion.

The deprecated jar files that must be removed after the deployment of patch 19 are the following:

1st set: pdfbox-2.0.24.jar, fontbox-2.0.24.jar, xmpbox-2.0.24.jar and jbig2-imageio-3.0.3.jar from folder(s):

    <root\_installation>\client\lib  
    <root\_installation>\importd\lib  
    <root\_installation>\released\lib  
    <root\_installation>\service-html\WEB-INF\lib

2nd set: postgresql-42.2.23.jar from folder(s):

    <root\_installation>\server\WEB-INF\lib  
    <root\_installation>\released\lib

3rd set: slf4j-api-1.5.8.jar and slf4j-log4j12-1.5.8.jar, from folder(s):

    <root\_installation>\server\WEB-INF\lib

4rd set: barcode-8.3.3-patched-linux-x86-64.jar, from folder(s):

```
<root_installation>\importd\lib  
<root_installation>\server\WEB-INF\lib  
<root_installation>\service-html\WEB-INF\lib
```

- e) This patch may require a Database Schema upgrade.  
Start the Administration Utility: at startup, it automatically checks the active Database configuration and performs the required Database Schema upgrade.  
Note that, after a Database Schema upgrade, importing Jobs from a previous patch level is not supported.
- f) Start the application: start the Windows Services / server processes in the reverse order:
  1. Info Input Solution Apache Tomcat Server
  2. Info Input Solution Export (Release) Server
  3. Info Input Solution Import Server (if installed)

## 5 System & Environment Requirements

### System requirements for the Info Input Solution Application Server:

#### CPU:

- Minimum requirement is 4 cores at 2GHz.
- For high volume systems, the recommended configuration is 12 cores @2.5+ GHz, or 12 cores of older / slower CPUs. Contact the Support team for the exact requirements according to the business case.
- When the Info Input Solution HTML Client is used by end-users, additional CPU is required for the HTML supporting service/process. The hardware specs depend on the use case and estimated load.
- When the Info Input Solution Classification and Extraction server-side engines are used in the Job Workflow(s), additional CPU is required for the Info Input Solution Core service/process. The hardware specs depend on the use case and estimated load.
- For virtual environments, features like Intel VT-x / VT-d and AMD V / Vi must be supported by the processors, activated on the machine, enabled in the Virtualization product and activated for the virtual machine.

#### Memory:

- Minimum memory size is 4 GB.
- Recommended memory size for high volume systems is 12 GB.

#### Operating System:

- Windows Server 2012 / 2016 / 2019 / 2022.
- Red Hat Enterprise Linux 7 / 8.
- SUSE Linux Enterprise Server 12 / 15.
- The above Operating Systems can be hosted on Google, AWS, Azure cloud providers.

#### Disk Storage:

- Single server installation: The recommended configuration is a dedicated disk array (RAID 5 or 10) either physically installed on the server, or exported over a dedicated high-speed Storage Area Network (SAN). The minimum configuration is a single disk, again either physically installed in the server, or exported over a SAN.
- Cluster installation: The recommended configuration is a dedicated Network Attached Storage (NAS) unit, using a file system native to the OS of the application servers, connected to the server over a dedicated high-speed network. The minimum configuration is a NAS that can be used by all nodes in the server cluster.
- SMB v3 compatible Windows Server file storage systems are supported.

#### Network:

- Single server: The recommended configuration is separate networks for HTTP, Database and storage traffic, if external storage is used. All networks should be at least 1 Gb and all nodes should be attached to the networks through switches. The minimum configuration for low volume systems is a single 1 Gb network.
- Server cluster: In addition to the single-server recommended configuration, the recommended configuration for a cluster is to provide additional networks for cluster heartbeat and reverse proxy to

cluster node HTTP traffic. The minimum configuration for low volume systems is a single 1 Gb network.

### Software requirements for the Info Input Solution Application Server:

Apache Tomcat: version 9.0.60 64-bit (included in the installation package) or any tomcat version minor to 9.0.

Database:

- SQL Server 2014 / 2016 / 2017 / 2019.
- Oracle 11.2 / 12.1 / 18c / 19c.
- PostgreSQL 13 or later.
- Azure SQL Server.

Bundled Database in installer:

If during installation, you choose to install a new instance of SQL Server 2019 Express, the operating system must meet the minimum requirements:

- SQL Server 2019 installer will automatically install/enable Microsoft .NET Framework 4.6.
- Windows Server 2012 R2 require KB2919355 before installing .NET Framework 4.6.

For more information, see Hardware and Software Requirements for installing SQL Server 2017 at the Microsoft website.

### Requirements for Thick Client

Before launching the Thick Client, make sure the user's workstation meets the following pre-requisites.

- Operating Systems: All supported Windows OS versions (Windows 8.1, 10, 11, 2012, 2016, 2019 and 2022, Windows 10 or 11 at Windows 365 Azure Cloud PC). The Thick Client can also be accessed through the Microsoft Azure Virtual Desktop application.
- All contemporary web browsers are supported: Google Chrome, MS Edge, MS Internet Explorer v11, Mozilla Firefox, Mozilla Firefox ESR.
- The Thick Client application is also offered through web browsers that support java plug in: MS Internet Explorer (v8 up to v11), Mozilla Firefox (v3.6 up to v51), Mozilla Firefox ESR (up to v52). Java Runtime Environment version 8, 32-bit and 64-bit, is also required in this case.

### Requirements for HTML Client

Before launching the HTML Client application, make sure the user's workstation meets the following pre-requisites.

- Operating Systems: All supported Windows OS versions (Windows 8.1, 10, 11, Windows Server 2012, 2016, 2019 and 2022, Windows 10 or 11 at Windows 365 Azure Cloud PC). The HTML Client can also be accessed through the Microsoft Azure Virtual Desktop application. All supported Mac OS versions.
- All contemporary web browsers are supported: Google Chrome v40+, MS Edge, MS Internet Explorer v11, Mozilla Firefox 40+, Mozilla Firefox ESR 40+, Apple Safari (on Mac OS).

**Kodak**

Info Input Solution

**April 2024 (ver. 6.3.19)**

All trademarks and trade names used are the property of their respective holders.