

Release Notes

Smart Touch for Kodak S2000 and S2000w Series Scanners

S2000 Version 2.0.2.1438
S2000w Version 2.0.2.1439

Purpose of Release: This is an updated release of Smart Touch for the Kodak/Alaris S2000 and S2000w Scanners with a new GUI and the ability to name output files using the serial number of the scanner.

Date: December 19, 2024

Required Scanner Software Versions:

KODAK S2000 CD Version 8.2 or higher

Alaris S2000w CD Version 3.16.2

OR

KODAK S2000w CD Version 5.2 or higher

Required Scanner Firmware Versions:

S2000 Firmware Version 230802

S2000w Firmware Version 230802 or higher

Supported Operating Systems *:

- WINDOWS 10 (32-bit and 64-bit)
- WINDOWS 11 (64-bit)
- WINDOWS Server 2016 (64-bit)
- WINDOWS Server 2019 (64-bit)
- WINDOWS Server 2022 (64-bit)

* It is expected that all operating systems listed above are kept up to date with the latest required Windows updates

Changes and New Features

❖ **Output File Naming**

- Output files can now be named using the Serial Number of the scanner.

❖ **Operating System Support**

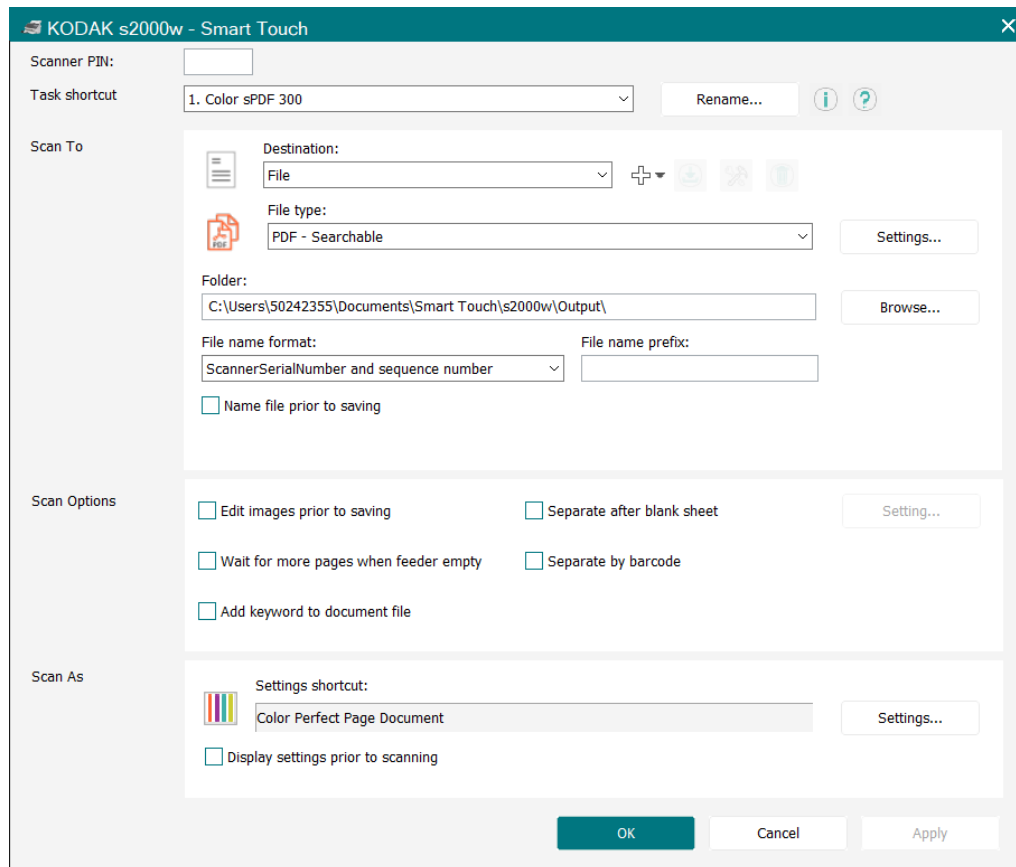
- Dropped support for Windows 8.1 and Windows Server 2012.

Release Notes

Smart Touch for Kodak S2000 and S2000w Series Scanners

❖ New End User Interface

- The GUI has a new look and feel, color scheme, and the configuration screen is larger:



Release Notes

Smart Touch for Kodak S2000 and S2000w Series Scanners

S2000 Version 1.9.9.1245

S2000w Version 1.9.9.1246

Purpose of Release: This is an updated release of Smart Touch for the Kodak/Alaris S2000 and S2000w Scanners to support Windows 11 and SharePoint Online Modern Authentication.

Date: March 23, 2022

Required Scanner Software Versions:

Alaris S2000 CD Version 4.14.1

OR

KODAK S2000 CD Version 8.2 or higher

Alaris S2000w CD Version 3.16.2

OR

KODAK S2000w CD Version 5.2 or higher

Required Scanner Firmware Versions:

S2000 Firmware Version 210503

S2000w Firmware Version 210503

Supported Operating Systems:

- WINDOWS 8.1 (32-bit and 64-bit)
- WINDOWS 10 (32-bit and 64-bit)
- WINDOWS 11 (64-bit)
- WINDOWS Server 2012 R2 (64-bit)
- WINDOWS Server 2016 (64-bit)

Changes and New Features

❖ **Security Updates**

- Outdated libraries have been updated including replacement of Microsoft libraries and library versions that are no longer supported.
- Updated the OCR engine libraries to the latest version available.
- Full support of TLS 1.2 As IT departments are deprecating support for TLS 1.0 and 1.1, this support becomes necessary for Smart Touch.

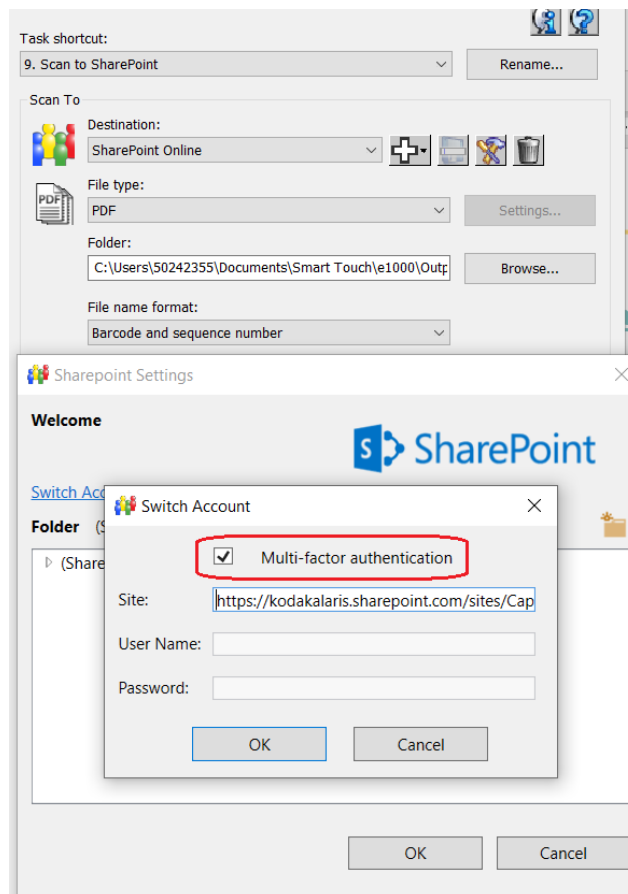
❖ **Operating System Support**

- Added support for Windows 11.
- Dropped support for Windows 7.

Release Notes

Smart Touch for Kodak S2000 and S2000w Series Scanners

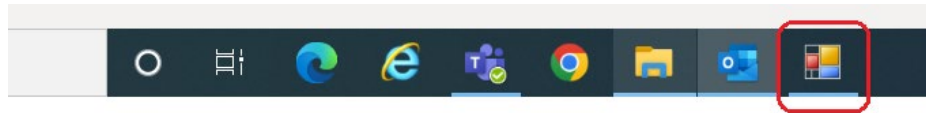
- ❖ **Vietnamese OCR Support**
 - The Vietnamese language is now available for selection when configuring a button shortcut for Searchable PDF output.
- ❖ **SharePoint Online Modern Authentication**
 - IT organizations are deprecating support for Basic or Legacy authentication
 - Modern Authentication encompasses methods such as **MFA (Multi-Factor Authentication)**



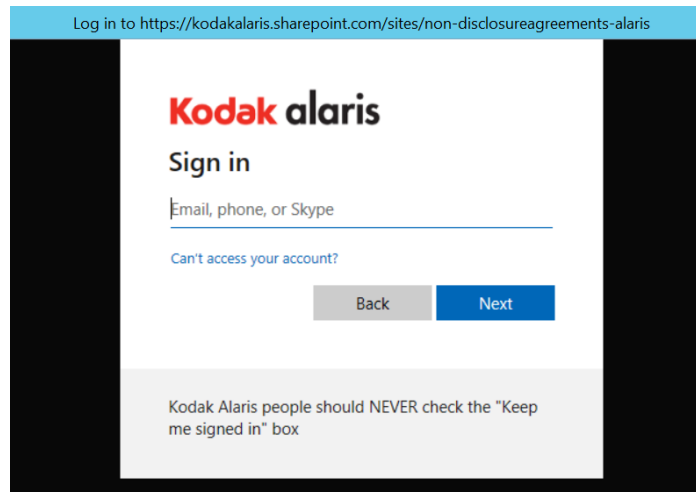
Release Notes

Smart Touch for Kodak S2000 and S2000w Series Scanners

- When enabled, no user credentials are required if the user who logged onto the PC **is a domain user on the company network.**
 - When the first scan session completes, after Smart Touch is launched, the user may see a taskbar pop-up (and window) that will go away on its own



- During this activity, Smart Touch is getting a Token that can be re-used for all subsequent output processing to SharePoint Online for as long as Smart Touch is running or until the PC is rebooted.
- If the user who logged onto the PC **is not a domain user on the company network**, then the user will be required to authenticate before the output to SharePoint Online can complete. For example:



Release Notes

Smart Touch for Kodak S2000 and S2000w Series Scanners

Problem Reports Fixed: The following problems have been fixed in this Smart Touch release for the S2000 and S2000w Series Scanners:

1. **CPSOLSTS-789 – Unable to output 100 or more documents using bar code separation**
 - When 99 bar code pages or less were scanned at a time, there was no issue. When 100 or more pages were scanned in a single scan session, Smart Touch would display the "Formatting images ..." message and then complete without outputting any of the scanned pages.
2. **CPSOLSTS-846 - Smart Touch can no longer connect to SharePoint Online**
 - a. Error message displayed when attempting to configure a button shortcut for SharePoint Online was "Cloud service unable to connect to URL:".
 - b. Smart Touch has been updated to fully support TLS 1.2 and can again connect to SharePoint Online.
3. **CPSOLSTS-813 - Cannot create multiple button shortcuts to different SharePoint Online Document Libraries**
 - a. Configuring a second button shortcut to a SharePoint Online document library would automatically change the first button shortcut (which was configured for a different document library) to output to the same document library.

Known Issues:

None

Release Notes

Smart Touch for Kodak S2000 and S2000w Series Scanners

S2000 Version 1.9.8.1170
S2000w Version 1.9.8.1171

Purpose of Release: Support for KODAK re-branded S2000 and S2000w Series Scanners. Please see “NOTES” below for important information on when a customer must upgrade to this latest release of Smart Touch. This release also resolves the problem where output to Google Drive stopped working.

Date: August 11, 2020

Required Scanner Software Versions:

Alaris S2000 CD Version 4.14.1

OR

KODAK S2000 CD Version 5.3.0 or higher

Alaris S2000w CD Version 3.16.2

OR

KODAK S2000w CD Version 4.3.0

Required Scanner Firmware Versions:

Alaris S2000 Firmware Version 190405

OR

KODAK S2000 Firmware Version 200502

Alaris S2000w Firmware Version 200201

OR

KODAK S2000w Firmware Version 200502

Supported Operating Systems:

- WINDOWS 7 SP1 (32-bit and 64-bit)
- WINDOWS 8.1 (32-bit and 64-bit)
- WINDOWS 10 (32-bit and 64-bit)
- WINDOWS 2012 Server
- WINDOWS 2012 R2 Server
- WINDOWS Server 2016 Std (64-bit)

Release Notes

Smart Touch for Kodak S2000 and S2000w Series Scanners

Problem Reports Fixed:

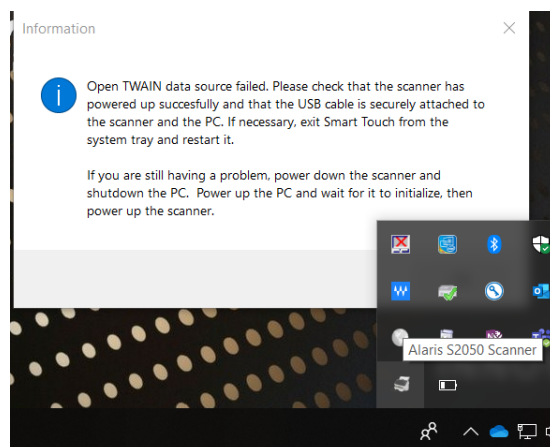
4. **CPSOLSTS-690 – Can no longer output to Google Drive**
 - Google Drive output stopped working in Smart Touch versions 1.9.7 and earlier as Google changed the method by which to authenticate to Google Drive.
 - Smart Touch version 1.9.8 or later is now required to scan and output to Google Drive.
 - When upgrading from a previous version of Smart Touch, task shortcuts configured for Google Drive must be re-configured as the user must re-authenticate to their Google Drive.
5. **CPSOLSTS-684** - The Smart Touch name in the Windows Start Menu is **replaced by inappropriate text (e.g., “NewShortcut16” instead of “Smart Touch”)** when installing on a German Windows OS.

Known Issues:

None

NOTES:

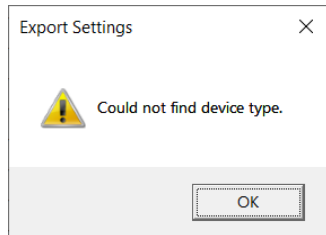
- Version 1.9.8 will support **both** the **Alaris** and **KODAK** S2000 and S2000w scanners.
- **Existing Alaris S2000 and S2000w Scanner customers** can stay at their current Smart Touch version if they don't update their driver installation to the KODAK-branded driver.
- If the **KODAK-branded driver is installed** on the PC, then the customer **must upgrade to or install Smart Touch Version 1.9.8**
 - If an S2000 or S2000w customer updates their Alaris driver installation to KODAK, but does not update their Smart Touch installation to Version 1.9.8, Smart Touch will show as ready in the System Tray but will report the following error when attempting to scan:



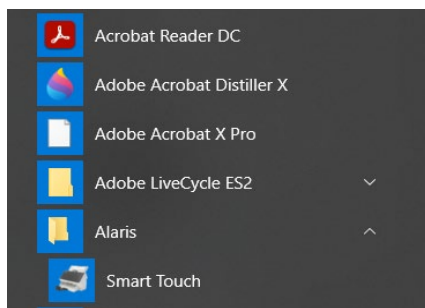
Release Notes

Smart Touch for Kodak S2000 and S2000w Series Scanners

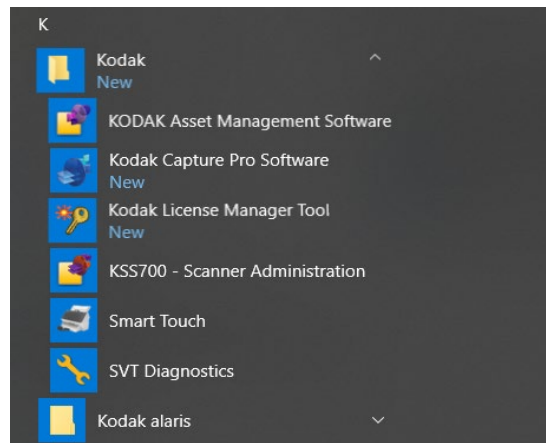
- When upgrading to Version 1.9.8 of Smart Touch, the **Smart Touch Export tool** must also be upgraded to the latest update on the web. If not, this error will be displayed:



- Smart Touch button configurations (also known as Task Shortcuts) will not change or be impacted after upgrading to Version 1.9.8
- After upgrading to Version 1.9.8 of Smart Touch, Smart Touch will be moved from the **Alaris** program group to the **Kodak** program group in the Windows Start Menu:



Before



After

Release Notes

Smart Touch for Kodak S2000 and S2000w Series Scanners

S2000 Version 1.9.7.1055**S2000w Version 1.9.7.1050**

Purpose of Release: This is a maintenance release of SmartTouch for internet download of the SmartTouch application for the Alaris S2000 (S2040, S2050, and S2070) and S2000w (S2060w and S2080w) Scanners.

Date: April 10, 2019

Required Scanner Software Versions:

S2000 CD Version 2.6.0 or higher
S2000w CD Version 1.19.0 or higher

Required Scanner Firmware Versions:

S2000 Firmware Version 181201 or higher
S2000w Firmware Version 181201 or higher

Supported Operating Systems:

- WINDOWS 7 SP1 (32-bit and 64-bit)
- WINDOWS 8.1 (32-bit and 64-bit)
- WINDOWS 10 (32-bit and 64-bit)
- WINDOWS 2012 Server
- WINDOWS 2012 R2 Server
- WINDOWS Server 2016 Std (64-bit)

Problem Reports Fixed:

1. **CPSOLSTS-413** – **“Failed to format images”** error when scanning many documents and outputting all scanned images into one Searchable PDF file. The supported number of images that can be output to one Searchable PDF file, scanned at 200 DPI Black & White, Grayscale, or Color, has been increased to **500 images** (i.e., 250 physical pages scanned in duplex mode or 500 physical pages scanned in simplex mode).

Known Issues:

None

Release Notes

Smart Touch for Kodak S2000 and S2000w Series Scanners

NOTES:

- Running the installer for this latest version of SmartTouch will upgrade an existing installation and keep all current SmartTouch button assignments.
- After upgrading to a 1.9.x release of SmartTouch, if the SmartTouch Import/Export tool was used to replicate SmartTouch settings across multiple PCs, and the option **All users share the same settings** is chosen, the SmartTouch settings will be moved to the following directory on the PC:

C:\Users\Public\Documents\Smart Touch\s2000 for the S2000 scanners
C:\Users\Public\Documents\Smart Touch\s2000w for the S2000w scanners

- **New Installation or Upgrade:** User will be prompted to “Send usage data” or “Do not send usage data”. If the user consents during the installation or upgrade of SmartTouch, and the PC has internet access, usage data will be collected via Google Analytics.

Release Notes

Smart Touch for Kodak S2000 and S2000w Series Scanners

S2000 Version 1.9.5.936

Purpose of Release: This is an updated release of Smart Touch for the Alaris S2000 scanners that will support the S2040 scanner in addition to the S2050 and S2070 scanners.

Date: July 27, 2018

Required Scanner Software Versions:
S2000 CD Version 2.6 or higher

Required Scanner Firmware Versions:
S2040 Firmware Version 180701 or higher
S2050/S2070 Firmware Version 180306 or higher

Supported Operating Systems:

- WINDOWS 7 SP1 (32-bit and 64-bit)
- WINDOWS 8.1 (32-bit and 64-bit)
- WINDOWS 10 (32-bit and 64-bit)
- WINDOWS 2012 Server
- WINDOWS 2012 R2 Server
- WINDOWS Server 2016 Std (64-bit)

New Features: Added support for the S2040 Scanner.

Release Notes

Smart Touch for Kodak S2000 and S2000w Series Scanners

S2000 Version 1.8.80.794

S2000w Version 1.8.80.795

Purpose of Release: This is the initial release of Smart Touch for the Alaris S2000 (S2050 and S2070) and S2000w (S2060w and S2080w) Scanners.

Date: March 28, 2018

Required Scanner Software Versions:

S2000 CD Version 1.16.1 or higher

S2000w CD Version 1.19.0 or higher

Required Scanner Firmware Versions:

S2000 Firmware Version 180306 or higher

S2000w Firmware Version 180306 or higher

Supported Operating Systems:

- WINDOWS 7 SP1 (32-bit and 64-bit)
- WINDOWS 8.1 (32-bit and 64-bit)
- WINDOWS 10 (32-bit and 64-bit)
- WINDOWS 2012 Server
- WINDOWS 2012 R2 Server
- WINDOWS Server 2016 Std (64-bit)

Problem Reports Fixed: The following problem reported by Smart Touch users on other Alaris scanner models has been fixed in the initial Smart Touch release for the S2000 and S2000w Series Scanners:

1. **DIAS-1460** - On Windows 10 PCs, the first scan after a system reboot may result in blank images or may get interrupted and not complete the output successfully.

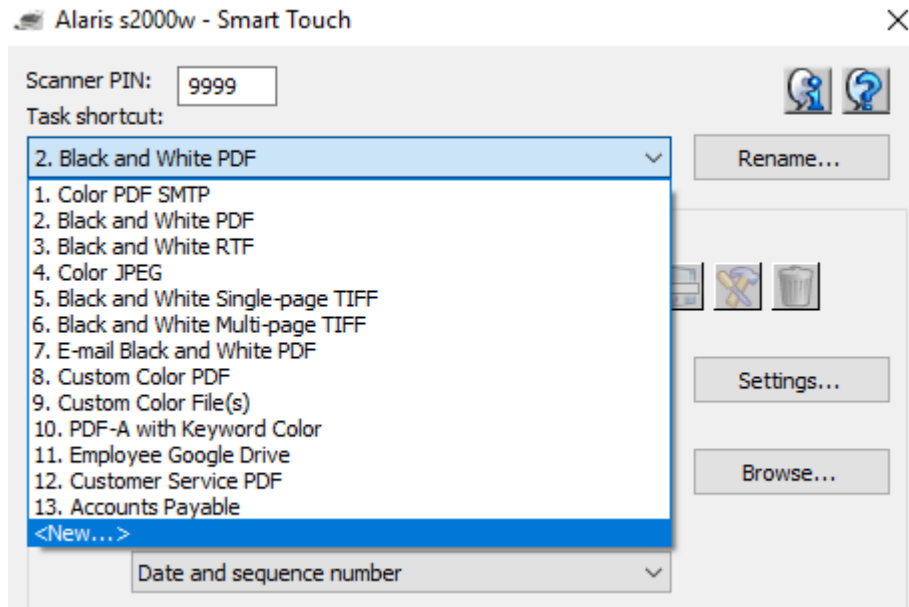
Release Notes

Smart Touch for Kodak S2000 and S2000w Series Scanners

New Features: Compared to Smart Touch for the other Alaris Scanners, this is what's new in Smart Touch for the S2000 and S2000w Scanners:

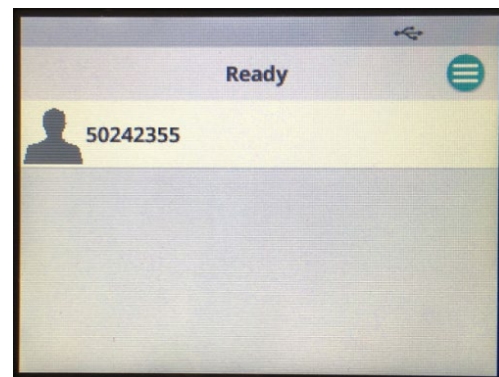
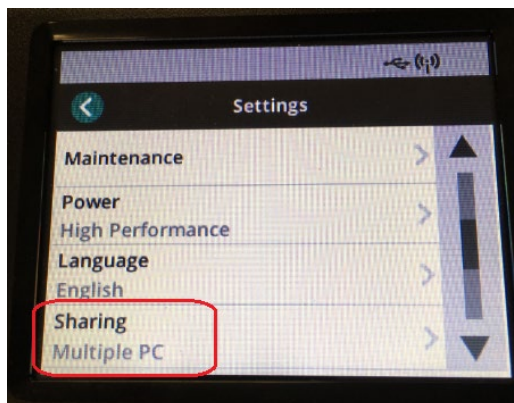
Support for 20 Buttons

Up to 20 buttons assignments (also known as Task Shortcuts) can be configured in Smart Touch for the S2000 and S2000w Series scanners



Multi-PC Support for S2060w and S2080w Scanners

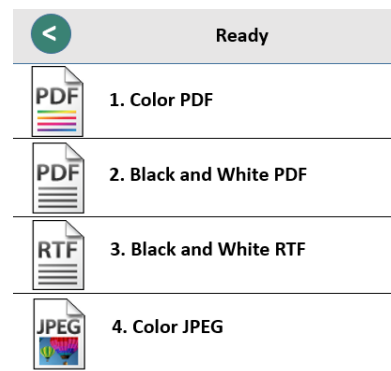
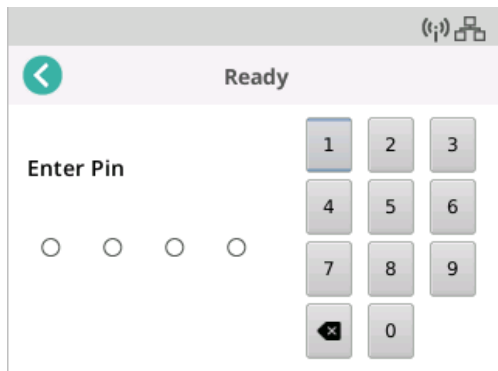
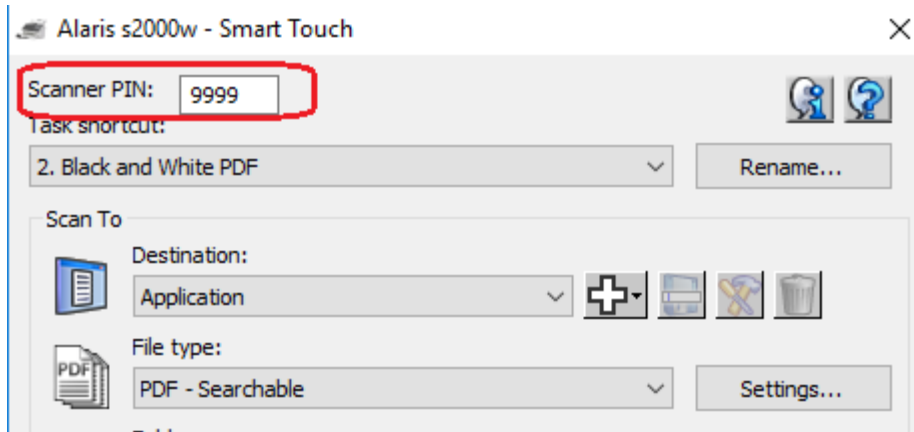
When configured for **Multiple PC** sharing, up to 10 PCs can connect to an S2000w scanner at any one time. The users' Windows login user name is displayed on the scanner's operator control panel:



Release Notes

Smart Touch for Kodak S2000 and S2000w Series Scanners

An optional Scanner PIN can be enabled from the main Smart Touch configuration screen requiring the user to enter their PIN when they initiate scanning from the scanner's operator control panel:



Release Notes

Smart Touch for Kodak S2000 and S2000w Series Scanners

Automatically Send Web Mail to Predefined Email Address

A new option called “**Send silent mail to**” is now available when configuring a Task Shortcut for Web Mail. Instead of the user being prompted to enter the destination email address for each scanned document, Smart Touch can be configured to automatically send the scanned document to the email address specified:

The screenshot shows a 'Web Mail' configuration dialog box with the following fields and settings:

- Destination name: SMTP Mail
- Sender information:
 - Name: Alaris Support
 - Return address: alaris.support@kodakalaris.com
- SMTP server setting:
 - Server address: smtp.kodakalaris.net
 - Port: 25
 - Use the following type of encrypted connection: None
 - My server requires authentication
 - Account name: (empty)
 - Password: (empty)
 - Maximum size of attachments: 10 MB
- Send silent mail to: alaris.customer@gmail.com

Buttons: OK, Cancel

Known Issues:

None