

Instructions for running Kodak Capture Pro Software Installer in Silent Mode

1. Copy the Capture Pro installer that you downloaded from the web (e.g., CapProSW_5_9_0.exe) to the disk drive or server from where you want to install Kodak Capture Pro Software.
2. You have four choices to make:
 - a. Do you want to install “stand-alone” or “client”? Stand-alone is a single Capture Pro workstation that is installed with its own license (hardware key/dongle or license file). A “client” is one of many Capture Pro workstations that share Job configurations and may get its license from a server. To run as a “client” you must have purchased the Network Edition of Capture Pro.
 - b. Do you want to install a “typical” or “advanced” setup of Capture Pro? Typical selects default folders for the application, workgroup (Job Setups), scan cache and batch output locations. Advanced allows you to modify the default installation location for one or more of these folders.
 - c. Will the silent install be on a workstation that has internet access? The installer will need to retrieve the license from the Kodak Alaris license server. If the workstation does not have internet access you will retrieve the license before installation and provide the installer with the license file.
 - d. Will the workstation be using a Capture Pro v3.1 (or earlier) hardware key? These licenses typically have an eight-digit Software Serial Number printed on the tag attached to the hardware key.

Depending on your choices, you will need to modify two files.

	Workstation	Setup	Internet Access	Legacy Hardware Key	Response File	Batch File
1	Stand-alone	Typical	Yes	No	Typical_standalone_nohardwarekey_network.iss	Typical Standalone NoHardwareKey Network.bat
2	Stand-alone	Typical	No	No	Typical_standalone_nohardwarekey_nonetwork.iss	Typical Standalone NoHardwareKey NoNetwork.bat
3	Stand-alone	Typical	Yes	Yes	Typical_standalone_hardwarekey8_network.iss	Typical Standalone HardwareKey8 Network.bat
4	Stand-alone	Typical	No	Yes	Typical_standalone_hardwarekey8_nonetwork.iss	Typical Standalone HardwareKey8 NoNetwork.bat
5	Stand-alone	Advanced	Yes	No	Advanced_standalone_nohardwarekey8_network.iss	Advanced Standalone NoHardwareKey Network.bat
6	Stand-alone	Advanced	No	No	Advanced_standalone_nohardwarekey8_nonetwork.iss	Advanced Standalone NoHardwareKey NoNetwork.bat
7	Stand-alone	Advanced	Yes	Yes	Advanced_standalone_hardwarekey8_network.iss	Advanced Standalone HardwareKey8 Network.bat
8	Stand-alone	Advanced	No	Yes	Advanced_standalone_hardwarekey8_nonetwork.iss	Advanced Standalone HardwareKey8 NoNetwork.bat
9	Stand-alone	Typical	Yes	No	Typical_standalone_nohardwarekey_noSSN.iss	Typical Standalone NoHardwareKey NoSSN.bat
10	Stand-alone	Advanced	Yes	No	Advanced_standalone_nohardwarekey_noSSN.iss	Advanced Standalone NoHardwareKey NoSSN.bat
11	Stand-alone	Typical	Yes	No	Typical_standalone_nohardwarekey_network_Trial.iss	Typical Standalone NoHardwareKey Network_Trial.bat
12	Stand-alone	Advanced	Yes	No	Advanced_standalone_nohardwarekey_network_Trial.iss	Advanced Standalone NoHardwareKey Network_Trial.bat
13	Client	Typical	Don't care	No	Typical_client_nohardwarekey.iss	Typical Client NoHardwareKey.bat
14	Client	Typical	Yes	Yes	Typical_client_hardwarekey8_network.iss	Typical Client HardwareKey8 network.bat
15	Client	Typical	No	Yes	Typical_client_hardwarekey8_nonetwork.iss	Typical Client HardwareKey8 NoNetwork.bat

16	Client	Advanced	Don't care	No	Advanced_client_nohardwarekey.iss	Advanced Client NoHardwareKey.bat
17	Client	Advanced	Yes	Yes	Advanced_client_hardwarekey8_network.iss	Advanced Client HardwareKey8 Network.bat
18	Client	Advanced	No	Yes	Advanced_client_hardwarekey8_nonetwork.iss	Advanced Client HardwareKey8 NoNetwork.bat

2.1 Use a text editor (Notepad) to edit the response file and batch file as described in the [Response Files](#) section below.

2.1.1 The batch file needs to be changed to reflect the path to the installer (e.g., CapProSW_5_9_0.exe) and the path to the appropriate response file (*.iss).

3. The batch file contains the command which will run the setup using a command line switch “/s” for silent install and a specified response file name. The format is:

program_name /s /f1response_file_name

The following shows the contents of “Typical Standalone NoHardwareKey Network.bat”.

```
"Z:\ Capture Pro Installer\CapProSw_5_9_0.exe" /s /f1"Z:\Capture Pro Installer\Typical_standalone_nohardwarekey_network.iss"
```

The appropriate batch file must be changed to reflect the full path to where the Capture Pro Installer files were copied. For example, if the “CapProSW_5_9_0.exe” downloaded from the web was copied to “C:\MyFolder\Capture Pro” then the new contents of “Typical Standalone NoHardwareKey Network.bat” should be the following including quotes:

```
"C:\MyFolder\Capture Pro\CapProSW_5_9_0.exe" /s /f1"C:\MyFolder\Capture Pro\ Typical_standalone_nohardwarekey_network.iss".
```

For Advanced silent setups, the new contents of “Advanced Standalone Silent.bat” should be:

```
"C:\MyFolder\Capture Pro\CapProSW_5_9_0.exe" /s /f1"C:\MyFolder\Capture Pro \ Advance_standalone_nohardwarekey_network.iss "
```

(One can see that the only difference between the Typical and Advanced batch files is the name of the response file to use.)

Be sure to use quotes as shown in the above batch file sample entries. Single spaces precede the command line switches /s and /f1. There is no space before the quoted name of the response file.

4. Run the appropriate batch file (for example: “Typical Standalone NoHardwareKey Network.bat”) by either double clicking on its name or by selecting ‘Open’ for it. A command prompt window will appear showing the batch file command being executed and the setup will commence without further intervention. The command prompt window will automatically close when the silent installation is complete. Setups take approximately one minute and vary depending on machine speed and target destination locations. Note that the display of the Product Registration web form is suppressed during a silent installation.

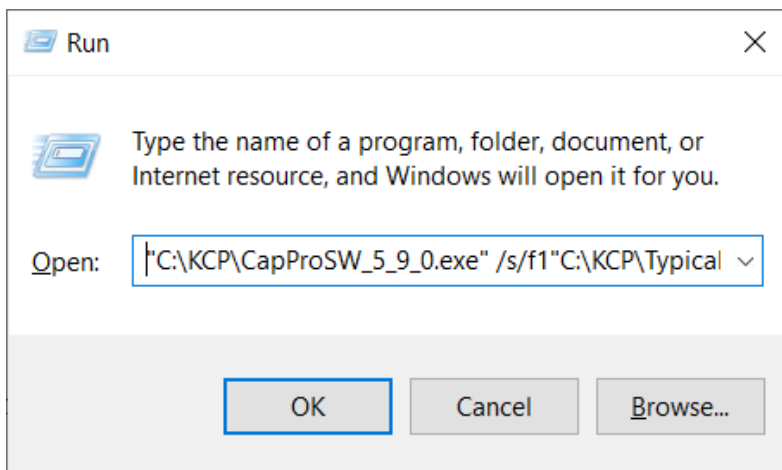
For Silent setups, a log file named “Setup.log” is normally created in the same folder as where the .iss response file is located: in our example the location would be “C:\MyFolder\Capture Pro”. (There are cases where the log file is output to the \Windows directory instead.) The Windows account logged into during the silent setup must have a Write privilege to the folder where the Setup.log file is to be created else an error will occur.

The contents of a normal Setup.log file follow:

```
[InstallShield Silent]
Version=v7.00
File=Log File
[ResponseResult]
ResultCode=0
[Application]
Name=Kodak Capture Pro Software
Version=5.9.0
Company=Kodak Alaris Inc.
Lang=0409
```

For a successful execution of a silent install, the **ResultCode will equal 0**.

4.1 NOTE: You can alternatively execute the command contained in the batch file directly from the Windows Run dialog. For short file paths this may be the preferred method, particularly if a truly silent setup is required since no windows pop up at all. The following sample Run dialog presumes that the installation files from the Capture Pro web pages have all been copied to C:\KCP :



5. Installing without a Software Serial Number

When silently installing more than one license you need to provide a unique Software Serial Number (SSN) for each installation. If this is not possible you may use the batch files Typical Standalone NoHardwareKey NoSSN.bat or Advanced Standalone NoHardwareKey NoSSN.bat. These files will install the software only. Because the software serial number is not provided, a license is not installed.

A software serial number will need to be provided and a valid license will need to be retrieved before the application will run.

To retrieve a license after installing without a Software Serial Number:

1. Launch “License Manager” utility (KCSPLM.exe) found in the application folder. This is typically “C:\Program Files (x86)\Kodak\Capture Pro”
2. Enter the “Software Serial Number” for the license that is to be used for the workstation.
3. Enter your company’s **Registration ID**. The same Registration ID can be used for all of your Capture Pro installations. If you don’t have a Registration ID, you can do the following:
 - a. Download and install the License Manager tool on any computer that has Internet access (www.alarisworld.com/go/captureprodownload)
 - b. Launch the License Manager.
 - c. Enter any one of your valid **Software Serial Numbers**.
 - d. Click on the **Register** button. Upon completing the Registration form, your Registration ID will be displayed on the License Manager screen.
4. Verify that the “Version number” is the correct version number for the application.
5. Select the button **Get License** if the workstation has Internet access.
 - a. If the workstation does not have Internet access, select **Request License**.
 - b. On a different computer with internet access, download the License Manager tool from the Capture Pro Software download site (www.alarisworld.com/go/captureprodownload)
 - c. Install and launch License Manager.
 - d. From the Request License tab select **Upload Request**.
 - e. Browse to the license request XML file that was created on the workstation without internet access and upload the file. Your license will be returned and stored at the same location where you browsed to select the license request file.
 - f. Move the returned license response XML file to the workstation where you are installing Capture Pro Software and select **Install License**.

Response Files

1 - Stand-alone, Typical, Internet Access, No Legacy Hardware key

Modify the content as follows: (sample response is shown in red font)

1. Enter the specific 16 digit Software Serial number on line "SSN=.
2. Enter a valid Registration ID on line "RegistrationID = ". A Registration ID is obtained by registering the Kodak Capture Pro Software. You may register by selecting Help > Register on the Capture Pro menu or by selecting the "Register" button on the License Manager tool, which may be downloaded from the Capture Pro download web site (www.alarisworld.com/go/captureprodownload)
3. Enter the appropriate version number on line "Version= ".

```
[InstallShield Silent]
```

```
Version=v7.00
```

```
File=Response File
```

```
[File Transfer]
```

```
OverwrittenReadOnly=NoToAll
```

```
[{3C08FCA5-C302-4538-BBFB-E2520A6292A3}-DlgOrder]
```

```
Dlg0={3C08FCA5-C302-4538-BBFB-E2520A6292A3}-SdLicense2Rtf-0
```

```
Count=8
```

```
Dlg1={3C08FCA5-C302-4538-BBFB-E2520A6292A3}-WibuInstallDialog-0
```

```
Dlg2={3C08FCA5-C302-4538-BBFB-E2520A6292A3}-InstallOption-0
```

```
Dlg3={3C08FCA5-C302-4538-BBFB-E2520A6292A3}-Software Serial Number-0
```

```
Dlg4={3C08FCA5-C302-4538-BBFB-E2520A6292A3}-Product Registration-1
```

```
Dlg5={3C08FCA5-C302-4538-BBFB-E2520A6292A3}-SetupType2-0
```

```
Dlg6={3C08FCA5-C302-4538-BBFB-E2520A6292A3}-SdShowInfoList-0
```

```
Dlg7={3C08FCA5-C302-4538-BBFB-E2520A6292A3}-SdStartCopy2-0
```

```
[{3C08FCA5-C302-4538-BBFB-E2520A6292A3}-SdLicense2Rtf-0]
```

```
Result=1
```

```
[{3C08FCA5-C302-4538-BBFB-E2520A6292A3}-WibuInstallDialog-0]
```

```
Result=1
```

```
nWibuInstall=1
```

```
[{3C08FCA5-C302-4538-BBFB-E2520A6292A3}-InstallOption-0]
```

```
Result=1
```

```
Sel-0=0
```

```
[{3C08FCA5-C302-4538-BBFB-E2520A6292A3}-Software Serial Number-0]
```

SSN= 1234567890123456

Result=1

[[{3C08FCA5-C302-4538-BBFB-E2520A6292A3}-Product Registration-1]

RegistrationID= KC12345678

Result=1

[[{3C08FCA5-C302-4538-BBFB-E2520A6292A3}-SetupType2-0]

Result=304

[[{3C08FCA5-C302-4538-BBFB-E2520A6292A3}-SdShowInfoList-0]

Result=1

[[{3C08FCA5-C302-4538-BBFB-E2520A6292A3}-SdStartCopy2-0]

Result=1

[Application]

Name=Kodak Capture Pro Software

Version=5.9.0

Company=Kodak Alaris Inc.

Lang=0409

[[{4E9DE7F6-8844-40D9-9C81-16C90AB77CB5}-DlgOrder]

Count=0

2 - Stand-alone, Typical, No Internet Access, No Legacy Hardware key

Modify the content as follows: (sample response is shown in red font)

1. Enter the specific 16 digit Software Serial number on line “SSN=”.
2. Enter a valid Registration ID on line “RegistrationID =”. A Registration ID is obtained by registering the Kodak Capture Pro Software. You may register by selecting Help > Register on the Capture Pro menu or by selecting the “Register” button on the License Manager tool, which may be downloaded from the Capture Pro download web site (www.alarisworld.com/go/captureprodownload). Enter the path of the folder, where you would like the license request file to be stored, on line “Request Folder=”. The license request file is a XML file that may be used to request a license from the Kodak Alaris license server, using a computer with internet access. There are two methods that may be used to create a request file and retrieve a license from the Kodak Alaris license server.
 - a. Method 1
 - i. Run the silent installer. If a valid license response XML file is not found at the location specified by “Response Path =” a license request file will be created at the location specified by “Request Folder=”.
 - ii. Move the license request file to a computer with internet access.
 - iii. Install and run the License Manager tool on this computer.
 - iv. On the “Request License” tab select “Upload Request”. Browse to the license request file you moved to this computer and select “Upload”.
 - v. Move the license response file returned by the Kodak Alaris license server (same location as the license request file) to the workstation without internet access.
 - vi. Continue with Step 4.
 - b. Method 2
 - i. Install and run the License Manager tool on the workstation where you wish to install Capture Pro.
 - ii. On the “Request License” tab select “Request License”.
 - iii. Select a location for the license request file and select “Request”.
 - iv. Move the license request file to a computer with internet access.
 - v. Install and run the License Manager tool on this computer.
 - vi. On the “Request License” tab select “Upload Request”. Browse to the license request file you moved to this computer and select “Upload”.
 - vii. Move the license response file returned by the Kodak Alaris license server (same location as the license request file) to the workstation without internet access.
 - viii. Continue with Step 4.
3. Enter the path and name of the license response file on line “Response Path=”. The license response file is a XML file returned by the Kodak Alaris license server and contains a license for the specific Software Serial number.
4. Enter the appropriate version number on line “Version= “.

[InstallShield Silent]

Version=v7.00

File=Response File
[File Transfer]
OverwrittenReadOnly=NoToAll
[{{3C08FCA5-C302-4538-BBFB-E2520A6292A3}}-DlgOrder]
Dlg0={{3C08FCA5-C302-4538-BBFB-E2520A6292A3}}-SdLicense2Rtf-0
Count=11
Dlg1={{3C08FCA5-C302-4538-BBFB-E2520A6292A3}}-WibuInstallDialog-0
Dlg2={{3C08FCA5-C302-4538-BBFB-E2520A6292A3}}-InstallOption-0
Dlg3={{3C08FCA5-C302-4538-BBFB-E2520A6292A3}}-Software Serial Number-0
Dlg4={{3C08FCA5-C302-4538-BBFB-E2520A6292A3}}-Product Registration-1
Dlg5={{3C08FCA5-C302-4538-BBFB-E2520A6292A3}}-License Request-2
Dlg6={{3C08FCA5-C302-4538-BBFB-E2520A6292A3}}-SdDisplayTopics-0
Dlg7={{3C08FCA5-C302-4538-BBFB-E2520A6292A3}}-License Response-3
Dlg8={{3C08FCA5-C302-4538-BBFB-E2520A6292A3}}-SetupType2-0
Dlg9={{3C08FCA5-C302-4538-BBFB-E2520A6292A3}}-SdShowInfoList-0
Dlg10={{3C08FCA5-C302-4538-BBFB-E2520A6292A3}}-SdStartCopy2-0
[{{3C08FCA5-C302-4538-BBFB-E2520A6292A3}}-SdLicense2Rtf-0]
Result=1
[{{3C08FCA5-C302-4538-BBFB-E2520A6292A3}}-WibuInstallDialog-0]
Result=1
nWibuInstall=1
[{{3C08FCA5-C302-4538-BBFB-E2520A6292A3}}-InstallOption-0]
Result=1
Sel-0=0
[{{3C08FCA5-C302-4538-BBFB-E2520A6292A3}}-Software Serial Number-0]
SSN=1234567890123456
Result=1
[{{3C08FCA5-C302-4538-BBFB-E2520A6292A3}}-Product Registration-1]
RegistrationID= KC12345678
Result=1
[{{3C08FCA5-C302-4538-BBFB-E2520A6292A3}}-License Request-2]
Request Folder= C:\KCP Silent Install\
Result=1
[{{3C08FCA5-C302-4538-BBFB-E2520A6292A3}}-SdDisplayTopics-0]
Result=1
[{{3C08FCA5-C302-4538-BBFB-E2520A6292A3}}-License Response-3]
Response Path= C:\KCP Silent Install\KCP1234567890123456_Response.xml
Result=1
[{{3C08FCA5-C302-4538-BBFB-E2520A6292A3}}-SetupType2-0]

Result=304

[{3C08FCA5-C302-4538-BBFB-E2520A6292A3}-SdShowInfoList-0]

Result=1

[{3C08FCA5-C302-4538-BBFB-E2520A6292A3}-SdStartCopy2-0]

Result=1

[Application]

Name=Kodak Capture Pro Software

Version=5.9.0

Company=Kodak Alaris Inc.

Lang=0409

[{0E86C6D8-2877-40A2-9123-53890705AA61}-DlgOrder]

Count=0

3 - Stand-alone, Typical, Internet Access, Legacy Hardware key

This install would typically be used to “upgrade” a version 3.1 or earlier installation that is using a USB hardware key. You must first uninstall any earlier version of Capture Pro Software. The hardware key must be plugged in when the silent installer is run.

Modify the content as follows: (sample response is shown in red font)

1. Enter a valid Registration ID on line “RegistrationID =. A Registration ID is obtained by registering the Kodak Capture Pro Software. You may register by selecting Help > Register on the Capture Pro menu or by selecting the “Register” button on the License Manager tool, which may be downloaded from the Capture Pro download web site <http://www.kodakalaris.com/go/CaptureProDownload>
2. Enter the appropriate version number on line “Version= “.

```
[InstallShield Silent]
Version=v7.00
File=Response File
[File Transfer]
OverwrittenReadOnly=NoToAll
[{{3C08FCA5-C302-4538-BBFB-E2520A6292A3}}-DlgOrder]
Dlg0={{3C08FCA5-C302-4538-BBFB-E2520A6292A3}}-SdLicense2Rtf-0
Count=7
Dlg1={{3C08FCA5-C302-4538-BBFB-E2520A6292A3}}-WibuInstallDialog-0
Dlg2={{3C08FCA5-C302-4538-BBFB-E2520A6292A3}}-InstallOption-0
Dlg3={{3C08FCA5-C302-4538-BBFB-E2520A6292A3}}-Product Registration-0
Dlg4={{3C08FCA5-C302-4538-BBFB-E2520A6292A3}}-SetupType2-0
Dlg5={{3C08FCA5-C302-4538-BBFB-E2520A6292A3}}-SdShowInfoList-0
Dlg6={{3C08FCA5-C302-4538-BBFB-E2520A6292A3}}-SdStartCopy2-0
[{{3C08FCA5-C302-4538-BBFB-E2520A6292A3}}-SdLicense2Rtf-0]
Result=1
[{{3C08FCA5-C302-4538-BBFB-E2520A6292A3}}-WibuInstallDialog-0]
Result=1
nWibuInstall=2
[{{3C08FCA5-C302-4538-BBFB-E2520A6292A3}}-InstallOption-0]
Result=1
Sel-0=0
[{{3C08FCA5-C302-4538-BBFB-E2520A6292A3}}-Product Registration-0]
RegistrationID= KC12345678
Result=1
```

[{3C08FCA5-C302-4538-BBFB-E2520A6292A3}-SetupType2-0]

Result=304

[{3C08FCA5-C302-4538-BBFB-E2520A6292A3}-SdShowInfoList-0]

Result=1

[{3C08FCA5-C302-4538-BBFB-E2520A6292A3}-SdStartCopy2-0]

Result=1

[Application]

Name=Kodak Capture Pro Software

Version=5.9.0

Company=Kodak Alaris Inc.

Lang=0409

[{C4EAEDA1-F205-4372-91EE-8615CB83A5D5}-DlgOrder]

Count=0

4 - Stand-alone, Typical, No Internet Access, Legacy Hardware key

Modify the content as follows: (sample response is shown in red font)

1. Enter a valid Registration ID on line "RegistrationID =". A Registration ID is obtained by registering the Kodak Capture Pro Software. You may register by selecting Help > Register on the Capture Pro menu or by selecting the "Register" button on the License Manager tool, which may be downloaded from the Capture Pro download web site <http://www.kodakalaris.com/go/CaptureProDownload>
2. Enter the path of the folder, where you would like the license request file to be stored, on line "Request Folder=". The license request file is a XML file that may be used to request a license from the Kodak Alaris license server, using a computer with internet access. There are two methods that may be used to create a request file and retrieve a license from the Kodak Alaris license server.
 - a. Method 1
 - i. Run the silent installer. If a valid license response XML file is not found at the location specified by "Response Path =" a license request file will be created at the location specified by "Request Folder=".
 - ii. Move the license request file to a computer with internet access.
 - iii. Install and run the License Manager tool on this computer.
 - iv. On the "Request License" tab select "Upload Request". Browse to the license request file you moved to this computer and select "Upload".
 - v. Move the license response file returned by the Kodak Alaris license server (same location as the license request file) to the workstation without internet access.
 - vi. Continue with Step 4.
 - b. Method 2
 - i. Install and run the License Manager tool on the workstation where you wish to install Capture Pro.
 - ii. On the "Request License" tab select "Request License".
 - iii. Select a location for the license request file and select "Request".
 - iv. Move the license request file to a computer with internet access.
 - v. Install and run the License Manager tool on this computer.
 - vi. On the "Request License" tab select "Upload Request". Browse to the license request file you moved to this computer and select "Upload".
 - vii. Move the license response file returned by the Kodak Alaris license server (same location as the license request file) to the workstation without internet access.
 - viii. Continue with Step 4.
3. Enter the path and name of the license response file on line "Response Path=". The license response file is a XML file returned by the Kodak Alaris license server and contains a license for the specific Software Serial number.
4. Enter the appropriate version number on line "Version=".

[InstallShield Silent]

Version=v7.00

File=Response File

[File Transfer]

OverwrittenReadOnly=NoToAll

[[{3C08FCA5-C302-4538-BBFB-E2520A6292A3}-DlgOrder]

Dlg0={3C08FCA5-C302-4538-BBFB-E2520A6292A3}-SdLicense2Rtf-0

Count=10

Dlg1={3C08FCA5-C302-4538-BBFB-E2520A6292A3}-WibuInstallDialog-0

Dlg2={3C08FCA5-C302-4538-BBFB-E2520A6292A3}-InstallOption-0

Dlg3={3C08FCA5-C302-4538-BBFB-E2520A6292A3}-Product Registration-0

Dlg4={3C08FCA5-C302-4538-BBFB-E2520A6292A3}-License Request-1

Dlg5={3C08FCA5-C302-4538-BBFB-E2520A6292A3}-SdDisplayTopics-0

Dlg6={3C08FCA5-C302-4538-BBFB-E2520A6292A3}-License Response-2

Dlg7={3C08FCA5-C302-4538-BBFB-E2520A6292A3}-SetupType2-0

Dlg8={3C08FCA5-C302-4538-BBFB-E2520A6292A3}-SdShowInfoList-0

Dlg9={3C08FCA5-C302-4538-BBFB-E2520A6292A3}-SdStartCopy2-0

[[{3C08FCA5-C302-4538-BBFB-E2520A6292A3}-SdLicense2Rtf-0]

Result=1

[[{3C08FCA5-C302-4538-BBFB-E2520A6292A3}-WibuInstallDialog-0]

Result=1

nWibuInstall=2

[[{3C08FCA5-C302-4538-BBFB-E2520A6292A3}-InstallOption-0]

Result=1

Sel-0=0

[[{3C08FCA5-C302-4538-BBFB-E2520A6292A3}-Product Registration-0]

RegistrationID= **KC12345678**

Result=1

[[{3C08FCA5-C302-4538-BBFB-E2520A6292A3}-License Request-1]

Request Folder= **C:\KCP Silent Install**

Result=1

[[{3C08FCA5-C302-4538-BBFB-E2520A6292A3}-SdDisplayTopics-0]

Result=1

[[{3C08FCA5-C302-4538-BBFB-E2520A6292A3}-License Response-2]

Response Path=**C:\KCP Silent Install\ACP1234567890123456_Response.xml**

Result=1

[[{3C08FCA5-C302-4538-BBFB-E2520A6292A3}-SetupType2-0]

Result=304

[[{3C08FCA5-C302-4538-BBFB-E2520A6292A3}-SdShowInfoList-0]

Result=1

[[{3C08FCA5-C302-4538-BBFB-E2520A6292A3}-SdStartCopy2-0]

Result=1

[Application]

Name=Kodak Capture Pro Software

Version=5.9.0

Company=Kodak Alaris Inc.

Lang=0409

[{B8814AD4-04A1-46F3-A034-492AB78CFDEB}-D]gOrder]

Count=0

5 - Stand-alone, Advanced, Internet Access, No Legacy Hardware key

Modify the content as follows: (sample response is shown in red font)

1. Enter the specific 16 digit Software Serial number on line "SSN=".
2. Enter a valid Registration ID on line "RegistrationID = ". A Registration ID is obtained by registering the Kodak Capture Pro Software. You may register by selecting Help > Register on the Capture Pro menu or by selecting the "Register" button on the License Manager tool, which may be downloaded from the Capture Pro download web site <http://www.kodakalaris.com/go/CaptureProDownload>.
3. The four destination paths, shown in blue font, may be modified. It is assumed that at least one of these paths will be changed, otherwise a Typical setup would suffice. For multiuser setups one would minimally edit the destination path of the workgroup files.
4. The Workstation ID maybe entered on line "WorkStationID=". NOTE: The Workstation ID MUST be unique for each workstation using the shared workgroup.
5. The Workstation name maybe entered on line "WorkStationName=". NOTE: The Workstation ID MUST be unique for each workstation using the shared workgroup.
6. Enter the appropriate version number on line "Version=".

[InstallShield Silent]

Version=v7.00

File=Response File

[File Transfer]

OverwrittenReadOnly=NoToAll

[{3C08FCA5-C302-4538-BBFB-E2520A6292A3}-DlgOrder]

Dlg0={3C08FCA5-C302-4538-BBFB-E2520A6292A3}-SdLicense2Rtf-0

Count=13

Dlg1={3C08FCA5-C302-4538-BBFB-E2520A6292A3}-WibuInstallDialog-0

Dlg2={3C08FCA5-C302-4538-BBFB-E2520A6292A3}-InstallOption-0

Dlg3={3C08FCA5-C302-4538-BBFB-E2520A6292A3}-Software Serial Number-0

Dlg4={3C08FCA5-C302-4538-BBFB-E2520A6292A3}-Product Registration-1

Dlg5={3C08FCA5-C302-4538-BBFB-E2520A6292A3}-SetupType2-0

Dlg6={3C08FCA5-C302-4538-BBFB-E2520A6292A3}-SdAskDestPath2-0

Dlg7={3C08FCA5-C302-4538-BBFB-E2520A6292A3}-AskDestPath-0

Dlg8={3C08FCA5-C302-4538-BBFB-E2520A6292A3}-WorkStation ID-0

Dlg9={3C08FCA5-C302-4538-BBFB-E2520A6292A3}-AskDestPath-1

Dlg10={3C08FCA5-C302-4538-BBFB-E2520A6292A3}-AskDestPath-2

Dlg11={3C08FCA5-C302-4538-BBFB-E2520A6292A3}-SdShowInfoList-0

Dlg12={3C08FCA5-C302-4538-BBFB-E2520A6292A3}-SdStartCopy2-0

[{3C08FCA5-C302-4538-BBFB-E2520A6292A3}-SdLicense2Rtf-0]

Result=1

[{3C08FCA5-C302-4538-BBFB-E2520A6292A3}-WibuInstallDialog-0]
Result=1
nWibuInstall=1
[{3C08FCA5-C302-4538-BBFB-E2520A6292A3}-InstallOption-0]
Result=1
Sel-0=0
[{3C08FCA5-C302-4538-BBFB-E2520A6292A3}-Software Serial Number-0]
SSN=1234567890123456
Result=1
[{3C08FCA5-C302-4538-BBFB-E2520A6292A3}-Product Registration-1]
RegistrationID= KC12345678
Result=1
[{3C08FCA5-C302-4538-BBFB-E2520A6292A3}-SetupType2-0]
Result=303
[{3C08FCA5-C302-4538-BBFB-E2520A6292A3}-SdAskDestPath2-0]
szDir= C:\Program Files (x86)\Kodak\Capture Pro
Result=1
[{3C08FCA5-C302-4538-BBFB-E2520A6292A3}-AskDestPath-0]
Result=1
szPath= C:\Users\Public\Documents\KCS Pro
[{3C08FCA5-C302-4538-BBFB-E2520A6292A3}-WorkStation ID-0]
WorkStationID=1
WorkStationName=Capture_1
Result=1
[{3C08FCA5-C302-4538-BBFB-E2520A6292A3}-AskDestPath-1]
Result=1
szPath=C:\ScanPro\
[{3C08FCA5-C302-4538-BBFB-E2520A6292A3}-AskDestPath-2]
Result=1
szPath=C:\BatchesPro\
[{3C08FCA5-C302-4538-BBFB-E2520A6292A3}-SdShowInfoList-0]
Result=1
[{3C08FCA5-C302-4538-BBFB-E2520A6292A3}-SdStartCopy2-0]
Result=1
[Application]
Name=Kodak Capture Pro Software
Version=5.9.0
Company=Kodak Alaris Inc.
Lang=0409

[[479926F8-FCFD-4E41-97E4-787928558DF6]-DlgOrder]

Count=0

C:\Program Files (x86)\Kodak\Capture Pro is the default destination path to where the application files will be installed. Modify this path if desired.

Example: “D:\Capture Pro”

C:\Users\Public\Documents\KCS Pro is the default destination path to where workgroup files such as Job and Page settings will be installed and can be shared by multiple users. Modify this path if desired, typically to a server.

Example: “W:\Multiuser\KCS PRO”

C:\ScanPro is the default destination path to where scanned images are sent. Modify this path if desired.

Example: “W:\Multiuser\KCP Images\”

C:\BatchesPro is the default destination path to where scanned images are sent. Modify this path if desired.

Example: “C:\My Pro Batches\”

6 - Stand-alone, Advanced, No Internet Access, No Legacy Hardware key

Modify the content as follows: (sample response is shown in red font)

1. Enter the specific 16 digit Software Serial number on line "SSN=".
2. Enter a valid Registration ID on line "RegistrationID =". A Registration ID is obtained by registering the Kodak Capture Pro Software. You may register by selecting Help > Register on the Capture Pro menu or by selecting the "Register" button on the License Manager tool, which may be downloaded from the Capture Pro download web site <http://www.kodakalaris.com/go/CaptureProDownload>
3. Enter the path of the folder, where you would like the license request file to be stored, on line "Request Folder=". The license request file is a XML file that may be used to request a license from the Kodak Alaris license server, using a computer with internet access. There are two methods that may be used to create a request file and retrieve a license from the Kodak Alaris license server.
 - a. Method 1
 - i. Run the silent installer. If a valid license response XML file is not found at the location specified by "Response Path =" a license request file will be created at the location specified by "Request Folder=".
 - ii. Move the license request file to a computer with internet access.
 - iii. Install and run the License Manager tool on this computer.
 - iv. On the "Request License" tab select "Upload Request". Browse to the license request file you moved to this computer and select "Upload".
 - v. Move the license response file returned by the Kodak Alaris license server (same location as the license request file) to the workstation without internet access.
 - vi. Continue with Step 4.
 - b. Method 2
 - i. Install and run the License Manager tool on the workstation where you wish to install Capture Pro.
 - ii. On the "Request License" tab select "Request License".
 - iii. Select a location for the license request file and select "Request".
 - iv. Move the license request file to a computer with internet access.
 - v. Install and run the License Manager tool on this computer.
 - vi. On the "Request License" tab select "Upload Request". Browse to the license request file you moved to this computer and select "Upload".
 - vii. Move the license response file returned by the Kodak Alaris license server (same location as the license request file) to the workstation without internet access.
 - viii. Continue with Step 4.
4. Enter the path and name of the license response file on line "Response Path=". The license response file is a XML file returned by the Kodak Alaris license server and contains a license for the specific Software Serial number.
5. The four destination paths, shown in blue font, may be modified. It is assumed that at least one of these paths will be changed, otherwise a Typical setup would suffice. For multiuser setups one would minimally edit the destination path of the workgroup files.
6. The Workstation ID maybe entered on line "WorkStationID=". NOTE: The Workstation ID MUST be unique for each workstation using the shared workgroup.

7. The Workstation name may be entered on line “WorkStationName=”. NOTE: The Workstation ID MUST be unique for each workstation using the shared workgroup.
8. Enter the appropriate version number on line “Version= “.

```
[InstallShield Silent]
Version=v7.00
File=Response File
[File Transfer]
OverwrittenReadOnly=NoToAll
[{{3C08FCA5-C302-4538-BBFB-E2520A6292A3}}-DlgOrder]
Dlg0={{3C08FCA5-C302-4538-BBFB-E2520A6292A3}}-SdLicense2Rtf-0
Count=16
Dlg1={{3C08FCA5-C302-4538-BBFB-E2520A6292A3}}-WibuInstallDialog-0
Dlg2={{3C08FCA5-C302-4538-BBFB-E2520A6292A3}}-InstallOption-0
Dlg3={{3C08FCA5-C302-4538-BBFB-E2520A6292A3}}-Software Serial Number-0
Dlg4={{3C08FCA5-C302-4538-BBFB-E2520A6292A3}}-Product Registration-1
Dlg5={{3C08FCA5-C302-4538-BBFB-E2520A6292A3}}-License Request-2
Dlg6={{3C08FCA5-C302-4538-BBFB-E2520A6292A3}}-SdDisplayTopics-0
Dlg7={{3C08FCA5-C302-4538-BBFB-E2520A6292A3}}-License Response-3
Dlg8={{3C08FCA5-C302-4538-BBFB-E2520A6292A3}}-SetupType2-0
Dlg9={{3C08FCA5-C302-4538-BBFB-E2520A6292A3}}-SdAskDestPath2-0
Dlg10={{3C08FCA5-C302-4538-BBFB-E2520A6292A3}}-AskDestPath-0
Dlg11={{3C08FCA5-C302-4538-BBFB-E2520A6292A3}}-WorkStation ID-0
Dlg12={{3C08FCA5-C302-4538-BBFB-E2520A6292A3}}-AskDestPath-1
Dlg13={{3C08FCA5-C302-4538-BBFB-E2520A6292A3}}-AskDestPath-2
Dlg14={{3C08FCA5-C302-4538-BBFB-E2520A6292A3}}-SdShowInfoList-0
Dlg15={{3C08FCA5-C302-4538-BBFB-E2520A6292A3}}-SdStartCopy2-0
[{{3C08FCA5-C302-4538-BBFB-E2520A6292A3}}-SdLicense2Rtf-0]
Result=1
[{{3C08FCA5-C302-4538-BBFB-E2520A6292A3}}-WibuInstallDialog-0]
Result=1
nWibuInstall=1
[{{3C08FCA5-C302-4538-BBFB-E2520A6292A3}}-InstallOption-0]
Result=1
Sel-0=0
[{{3C08FCA5-C302-4538-BBFB-E2520A6292A3}}-Software Serial Number-0]
SSN=1234567890123456
Result=1
[{{3C08FCA5-C302-4538-BBFB-E2520A6292A3}}-Product Registration-1]
```

RegistrationID= KC12345678
Result=1
[{{3C08FCA5-C302-4538-BBFB-E2520A6292A3}}-License Request-2]
Request Folder= C:\KCP Silent Install\
Result=1
[{{3C08FCA5-C302-4538-BBFB-E2520A6292A3}}-SdDisplayTopics-0]
Result=1
[{{3C08FCA5-C302-4538-BBFB-E2520A6292A3}}-License Response-3]
Response Path= C:\KCP Silent Install\ACP1234567890123456_Response.xml
Result=1
[{{3C08FCA5-C302-4538-BBFB-E2520A6292A3}}-SetupType2-0]
Result=303
[{{3C08FCA5-C302-4538-BBFB-E2520A6292A3}}-SdAskDestPath2-0]
szDir=C:\Program Files (x86)\Kodak\Capture Pro
Result=1
[{{3C08FCA5-C302-4538-BBFB-E2520A6292A3}}-AskDestPath-0]
Result=1
szPath=C:\Users\Public\Documents\KCS Pro
[{{3C08FCA5-C302-4538-BBFB-E2520A6292A3}}-WorkStation ID-0]
WorkStationID=1
WorkStationName=Capture_1
Result=1
[{{3C08FCA5-C302-4538-BBFB-E2520A6292A3}}-AskDestPath-1]
Result=1
szPath=C:\ScanPro\
[{{3C08FCA5-C302-4538-BBFB-E2520A6292A3}}-AskDestPath-2]
Result=1
szPath=C:\BatchesPro\
[{{3C08FCA5-C302-4538-BBFB-E2520A6292A3}}-SdShowInfoList-0]
Result=1
[{{3C08FCA5-C302-4538-BBFB-E2520A6292A3}}-SdStartCopy2-0]
Result=1
[Application]
Name=Kodak Capture Pro Software
Version=5.9.0
Company=Kodak Alaris Inc.
Lang=0409
[{{B8814AD4-04A1-46F3-A034-492AB78CFDEB}}-DlgOrder]
Count=0

C:\Program Files (x86)\Kodak\Capture Pro is the default destination path to where the application files will be installed. Modify this path if desired.

Example: "D:\Capture Pro"

C:\Users\Public\Documents\KCS Pro is the default destination path to where workgroup files such as Job and Page settings will be installed and can be shared by multiple users. Modify this path if desired, typically to a server.

Example: "W:\Multiuser\KCS PRO"

C:\ScanPro is the default destination path to where scanned images are sent. Modify this path if desired.

Example: "W:\Multiuser\KCP Images\"

C:\BatchesPro is the default destination path to where scanned images are sent. Modify this path if desired.

Example: "C:\My Pro Batches\"

7 - Stand-alone, Advanced, Internet Access, Legacy Hardware key

This install would typically be used to “upgrade” a version 3.1 or earlier installation that is using a USB hardware key. You must first uninstall any earlier version of Kodak Capture Pro Software. The hardware key must be plugged in when the silent installer is run.

Modify the content as follows: (sample response is shown in red font)

1. Enter a valid Registration ID on line “RegistrationID =”. A Registration ID is obtained by registering the Kodak Capture Pro Software. You may register by selecting Help > Register on the Capture Pro menu or by selecting the “Register” button on the License Manager tool, which may be downloaded from the Capture Pro download web site <http://www.kodakalaris.com/go/CaptureProDownload>
2. The four destination paths, shown in blue font, may be modified. It is assumed that at least one of these paths will be changed, otherwise a Typical setup would suffice. For multiuser setups one would minimally edit the destination path of the workgroup files.
3. The Workstation ID maybe entered on line “WorkStationID=”. NOTE: The Workstation ID MUST be unique for each workstation using the shared workgroup.
4. The Workstation name maybe entered on line “WorkStationName=”. NOTE: The Workstation ID MUST be unique for each workstation using the shared workgroup.
5. Enter the appropriate version number on line “Version= “.

[InstallShield Silent]

Version=v7.00

File=Response File

[File Transfer]

OverwrittenReadOnly=NoToAll

[{3C08FCA5-C302-4538-BBFB-E2520A6292A3}-DlgOrder]

Dlg0={3C08FCA5-C302-4538-BBFB-E2520A6292A3}-SdLicense2Rtf-0

Count=12

Dlg1={3C08FCA5-C302-4538-BBFB-E2520A6292A3}-WibuInstallDialog-0

Dlg2={3C08FCA5-C302-4538-BBFB-E2520A6292A3}-InstallOption-0

Dlg3={3C08FCA5-C302-4538-BBFB-E2520A6292A3}-Product Registration-0

Dlg4={3C08FCA5-C302-4538-BBFB-E2520A6292A3}-SetupType2-0

Dlg5={3C08FCA5-C302-4538-BBFB-E2520A6292A3}-SdAskDestPath2-0

Dlg6={3C08FCA5-C302-4538-BBFB-E2520A6292A3}-AskDestPath-0

Dlg7={3C08FCA5-C302-4538-BBFB-E2520A6292A3}-WorkStation ID-0

Dlg8={3C08FCA5-C302-4538-BBFB-E2520A6292A3}-AskDestPath-1

Dlg9={3C08FCA5-C302-4538-BBFB-E2520A6292A3}-AskDestPath-2

Dlg10={3C08FCA5-C302-4538-BBFB-E2520A6292A3}-SdShowInfoList-0

Dlg11={3C08FCA5-C302-4538-BBFB-E2520A6292A3}-SdStartCopy2-0

[{3C08FCA5-C302-4538-BBFB-E2520A6292A3}-SdLicense2Rtf-0]

Result=1
[{{3C08FCA5-C302-4538-BBFB-E2520A6292A3}}-WibuInstallDialog-0]
Result=1
nWibuInstall=2
[{{3C08FCA5-C302-4538-BBFB-E2520A6292A3}}-InstallOption-0]
Result=1
Sel-0=0
[{{3C08FCA5-C302-4538-BBFB-E2520A6292A3}}-Product Registration-0]
RegistrationID= **KC12345678**
Result=1
[{{3C08FCA5-C302-4538-BBFB-E2520A6292A3}}-SetupType2-0]
Result=303
[{{3C08FCA5-C302-4538-BBFB-E2520A6292A3}}-SdAskDestPath2-0]
szDir= [C:\Program Files \(x86\)\Kodak\Capture Pro](#)
Result=1
[{{3C08FCA5-C302-4538-BBFB-E2520A6292A3}}-AskDestPath-0]
Result=1
szPath= [C:\Users\Public\Documents\KCS Pro](#)
[{{3C08FCA5-C302-4538-BBFB-E2520A6292A3}}-WorkStation ID-0]
WorkStationID= **1**
WorkStationName= **Capture_1**
Result=1
[{{3C08FCA5-C302-4538-BBFB-E2520A6292A3}}-AskDestPath-1]
Result=1
szPath= [C:\ScanPro\](#)
[{{3C08FCA5-C302-4538-BBFB-E2520A6292A3}}-AskDestPath-2]
Result=1
szPath= [C:\BatchesPro\](#)
[{{3C08FCA5-C302-4538-BBFB-E2520A6292A3}}-SdShowInfoList-0]
Result=1
[{{3C08FCA5-C302-4538-BBFB-E2520A6292A3}}-SdStartCopy2-0]
Result=1
[Application]
Name=Kodak Capture Pro Software
Version=**5.9.0**
Company=Kodak Alaris Inc.
Lang=0409
[{{B8814AD4-04A1-46F3-A034-492AB78CFDEB}}-DlgOrder]
Count=0

C:\Program Files (x86)\Kodak\Capture Pro is the default destination path to where the application files will be installed. Modify this path if desired.

Example: “D:\Capture Pro”

C:\Users\Public\Documents\KCS Pro is the default destination path to where workgroup files such as Job and Page settings will be installed and can be shared by multiple users. Modify this path if desired, typically to a server.

Example: “W:\Multiuser\KCS PRO”

C:\ScanPro is the default destination path to where scanned images are sent. Modify this path if desired.

Example: “W:\Multiuser\KCP Images\”

C:\BatchesPro is the default destination path to where scanned images are sent. Modify this path if desired.

Example: “C:\My Pro Batches\”

8 - Stand-alone, Advanced, No Internet Access, Legacy Hardware key

Modify the content as follows: (sample response is shown in red font)

1. Enter a valid Registration ID on line "RegistrationID =". A Registration ID is obtained by registering the Kodak Capture Pro Software. You may register by selecting Help > Register on the Capture Pro menu or by selecting the "Register" button on the License Manager tool, which may be downloaded from the Capture Pro download web site <http://www.kodakalaris.com/go/CaptureProDownload>
2. Enter the path of the folder, where you would like the license request file to be stored, on line "Request Folder=". The license request file is a XML file that may be used to request a license from the Kodak Alaris license server, using a computer with internet access. There are two methods that may be used to create a request file and retrieve a license from the Kodak Alaris license server.
 - a. Method 1
 - i. Run the silent installer. If a valid license response XML file is not found at the location specified by "Response Path =" a license request file will be created at the location specified by "Request Folder=".
 - ii. Move the license request file to a computer with internet access.
 - iii. Install and run the License Manager tool on this computer.
 - iv. On the "Request License" tab select "Upload Request". Browse to the license request file you moved to this computer and select "Upload".
 - v. Move the license response file returned by the Kodak Alaris license server (same location as the license request file) to the workstation without internet access.
 - vi. Continue with Step 4.
 - b. Method 2
 - i. Install and run the License Manager tool on the workstation where you wish to install Capture Pro.
 - ii. On the "Request License" tab select "Request License".
 - iii. Select a location for the license request file and select "Request".
 - iv. Move the license request file to a computer with internet access.
 - v. Install and run the License Manager tool on this computer.
 - vi. On the "Request License" tab select "Upload Request". Browse to the license request file you moved to this computer and select "Upload".
 - vii. Move the license response file returned by the Kodak Alaris license server (same location as the license request file) to the workstation without internet access.
 - viii. Continue with Step 4.
3. Enter the path and name of the license response file on line "Response Path=". The license response file is a XML file returned by the Kodak Alaris license server and contains a license for the specific Software Serial number.
4. The four destination paths, shown in blue font, may be modified. It is assumed that at least one of these paths will be changed, otherwise a Typical setup would suffice. For multiuser setups one would minimally edit the destination path of the workgroup files.
5. The Workstation ID maybe entered on line "WorkStationID=". NOTE: The Workstation ID MUST be unique for each workstation using the shared workgroup.

6. The Workstation name may be entered on line “WorkStationName=”. NOTE: The Workstation ID MUST be unique for each workstation using the shared workgroup.
7. Enter the appropriate version number on line “Version= “.

[InstallShield Silent]

Version=v7.00

File=Response File

[File Transfer]

OverwrittenReadOnly=NoToAll

[{3C08FCA5-C302-4538-BBFB-E2520A6292A3}-DlgOrder]

Dlg0={3C08FCA5-C302-4538-BBFB-E2520A6292A3}-SdLicense2Rtf-0

Count=15

Dlg1={3C08FCA5-C302-4538-BBFB-E2520A6292A3}-WibuInstallDialog-0

Dlg2={3C08FCA5-C302-4538-BBFB-E2520A6292A3}-InstallOption-0

Dlg3={3C08FCA5-C302-4538-BBFB-E2520A6292A3}-Product Registration-0

Dlg4={3C08FCA5-C302-4538-BBFB-E2520A6292A3}-License Request-1

Dlg5={3C08FCA5-C302-4538-BBFB-E2520A6292A3}-SdDisplayTopics-0

Dlg6={3C08FCA5-C302-4538-BBFB-E2520A6292A3}-License Response-2

Dlg7={3C08FCA5-C302-4538-BBFB-E2520A6292A3}-SetupType2-0

Dlg8={3C08FCA5-C302-4538-BBFB-E2520A6292A3}-SdAskDestPath2-0

Dlg9={3C08FCA5-C302-4538-BBFB-E2520A6292A3}-AskDestPath-0

Dlg10={3C08FCA5-C302-4538-BBFB-E2520A6292A3}-WorkStation ID-0

Dlg11={3C08FCA5-C302-4538-BBFB-E2520A6292A3}-AskDestPath-1

Dlg12={3C08FCA5-C302-4538-BBFB-E2520A6292A3}-AskDestPath-2

Dlg13={3C08FCA5-C302-4538-BBFB-E2520A6292A3}-SdShowInfoList-0

Dlg14={3C08FCA5-C302-4538-BBFB-E2520A6292A3}-SdStartCopy2-0

[{3C08FCA5-C302-4538-BBFB-E2520A6292A3}-SdLicense2Rtf-0]

Result=1

[{3C08FCA5-C302-4538-BBFB-E2520A6292A3}-WibuInstallDialog-0]

Result=1

nWibuInstall=2

[{3C08FCA5-C302-4538-BBFB-E2520A6292A3}-InstallOption-0]

Result=1

Sel-0=0

[{3C08FCA5-C302-4538-BBFB-E2520A6292A3}-Product Registration-0]

RegistrationID= **KC12345678**

Result=1

[{3C08FCA5-C302-4538-BBFB-E2520A6292A3}-License Request-1]

Request Folder= **C:\KCP Silent Install**

Result=1
[{{3C08FCA5-C302-4538-BBFB-E2520A6292A3}}-SdDisplayTopics-0]
Result=1
[{{3C08FCA5-C302-4538-BBFB-E2520A6292A3}}-License Response-2]
Response Path= C:\KCP Silent Install\ACPI234567890123456_Response.xml
Result=1
[{{3C08FCA5-C302-4538-BBFB-E2520A6292A3}}-SetupType2-0]
Result=303
[{{3C08FCA5-C302-4538-BBFB-E2520A6292A3}}-SdAskDestPath2-0]
szDir= C:\Program Files (x86)\Kodak\Capture Pro
Result=1
[{{3C08FCA5-C302-4538-BBFB-E2520A6292A3}}-AskDestPath-0]
Result=1
szPath= C:\Users\Public\Documents\KCS Pro
[{{3C08FCA5-C302-4538-BBFB-E2520A6292A3}}-WorkStation ID-0]
WorkStationID=1
WorkStationName= Capture_1
Result=1
[{{3C08FCA5-C302-4538-BBFB-E2520A6292A3}}-AskDestPath-1]
Result=1
szPath=C:\ScanPro\
[{{3C08FCA5-C302-4538-BBFB-E2520A6292A3}}-AskDestPath-2]
Result=1
szPath= C:\BatchesPro\
[{{3C08FCA5-C302-4538-BBFB-E2520A6292A3}}-SdShowInfoList-0]
Result=1
[{{3C08FCA5-C302-4538-BBFB-E2520A6292A3}}-SdStartCopy2-0]
Result=1
[Application]
Name=Kodak Capture Pro Software
Version=5.9.0
Company=Kodak Alaris Inc.
Lang=0409
[{{B8814AD4-04A1-46F3-A034-492AB78CFDEB}}-DlgOrder]
Count=0

C:\Program Files (x86)\Kodak\Capture Pro is the default destination path to where the application files will be installed. Modify this path if desired.

Example: "D:\Capture Pro"

C:\Users\Public\Documents\KCS Pro is the default destination path to where workgroup files such as Job and Page settings will be installed and can be shared by multiple users. Modify this path if desired, typically to a server.

Example: “W:\Multiuser\KCS PRO”

C:\ScanPro is the default destination path to where scanned images are sent. Modify this path if desired.

Example: “W:\Multiuser\KCP Images\”

C:\BatchesPro is the default destination path to where scanned images are sent. Modify this path if desired.

Example: “C:\My Pro Batches\”

9 - Stand-alone, Typical, Internet Access, No Legacy Hardware key, No Software Serial Number

No Modification to the iss file is required.

```
[InstallShield Silent]
Version=v7.00
File=Response File
[File Transfer]
OverwrittenReadOnly=NoToAll
[{{3C08FCA5-C302-4538-BBFB-E2520A6292A3}}-DlgOrder]
Dlg0={{3C08FCA5-C302-4538-BBFB-E2520A6292A3}}-SdLicense2Rtf-0
Count=7
Dlg1={{3C08FCA5-C302-4538-BBFB-E2520A6292A3}}-WibuInstallDialog-0
Dlg2={{3C08FCA5-C302-4538-BBFB-E2520A6292A3}}-InstallOption-0
Dlg3={{3C08FCA5-C302-4538-BBFB-E2520A6292A3}}-Software Serial Number-0
Dlg4={{3C08FCA5-C302-4538-BBFB-E2520A6292A3}}-SetupType2-0
Dlg5={{3C08FCA5-C302-4538-BBFB-E2520A6292A3}}-SdShowInfoList-0
Dlg6={{3C08FCA5-C302-4538-BBFB-E2520A6292A3}}-SdStartCopy2-0
[{{3C08FCA5-C302-4538-BBFB-E2520A6292A3}}-SdLicense2Rtf-0]
Result=1
[{{3C08FCA5-C302-4538-BBFB-E2520A6292A3}}-WibuInstallDialog-0]
Result=1
nWibuInstall=1
[{{3C08FCA5-C302-4538-BBFB-E2520A6292A3}}-InstallOption-0]
Result=1
Sel-0=0
[{{3C08FCA5-C302-4538-BBFB-E2520A6292A3}}-Software Serial Number-0]
SSN=Silent without SSN
Result=9999
TrialEdition=0
[{{3C08FCA5-C302-4538-BBFB-E2520A6292A3}}-SetupType2-0]
Result=304
[{{3C08FCA5-C302-4538-BBFB-E2520A6292A3}}-SdShowInfoList-0]
Result=1
[{{3C08FCA5-C302-4538-BBFB-E2520A6292A3}}-SdStartCopy2-0]
```

Result=1

[Application]

Name=Kodak Capture Pro Software

Version=5.9.0

Company=Kodak Alaris Inc.

Lang=0409

[{B29FF64D-7D6F-431B-A8AF-C644309F08CA}-DlgOrder]

Count=0

[{43C0781F-CA07-47F1-8FD6-D7075AC588CA}-DlgOrder]

Count=0

10 - Stand-alone, Advanced, Internet Access, No Legacy Hardware key, No Software Serial Number

Modify the content as follows: (sample response is shown in red font)

1. The four destination paths, shown in blue font, may be modified. It is assumed that at least one of these paths will be changed, otherwise a Typical setup would suffice. For multiuser setups one would minimally edit the destination path of the workgroup files.
2. The Workstation ID maybe entered on line “WorkStationID=”. NOTE: The Workstation ID MUST be unique for each workstation using the shared workgroup.
3. The Workstation name maybe entered on line “WorkStationName=”. NOTE: The Workstation ID MUST be unique for each workstation using the shared workgroup.
4. Enter the appropriate version number on line “Version= “.

[InstallShield Silent]

Version=v7.00

File=Response File

[File Transfer]

OverwrittenReadOnly=NoToAll

[{3C08FCA5-C302-4538-BBFB-E2520A6292A3}-DlgOrder]

Dlg0={3C08FCA5-C302-4538-BBFB-E2520A6292A3}-SdLicense2Rtf-0

Count=12

Dlg1={3C08FCA5-C302-4538-BBFB-E2520A6292A3}-WibuInstallDialog-0

Dlg2={3C08FCA5-C302-4538-BBFB-E2520A6292A3}-InstallOption-0

Dlg3={3C08FCA5-C302-4538-BBFB-E2520A6292A3}-Software Serial Number-0

Dlg4={3C08FCA5-C302-4538-BBFB-E2520A6292A3}-SetupType2-0

Dlg5={3C08FCA5-C302-4538-BBFB-E2520A6292A3}-SdAskDestPath2-0

Dlg6={3C08FCA5-C302-4538-BBFB-E2520A6292A3}-AskDestPath-0

Dlg7={3C08FCA5-C302-4538-BBFB-E2520A6292A3}-WorkStation ID-0

Dlg8={3C08FCA5-C302-4538-BBFB-E2520A6292A3}-AskDestPath-1

Dlg9={3C08FCA5-C302-4538-BBFB-E2520A6292A3}-AskDestPath-2

Dlg10={3C08FCA5-C302-4538-BBFB-E2520A6292A3}-SdShowInfoList-0

Dlg11={3C08FCA5-C302-4538-BBFB-E2520A6292A3}-SdStartCopy2-0

[{3C08FCA5-C302-4538-BBFB-E2520A6292A3}-SdLicense2Rtf-0]

Result=1

[{3C08FCA5-C302-4538-BBFB-E2520A6292A3}-WibuInstallDialog-0]

Result=1

nWibuInstall=1

[{3C08FCA5-C302-4538-BBFB-E2520A6292A3}-InstallOption-0]
Result=1
Sel-0=0
[{3C08FCA5-C302-4538-BBFB-E2520A6292A3}-Software Serial Number-0]
SSN=Silent without SSN
Result=9999
TrialEdition=0
[{3C08FCA5-C302-4538-BBFB-E2520A6292A3}-SetupType2-0]
Result=303
[{3C08FCA5-C302-4538-BBFB-E2520A6292A3}-SdAskDestPath2-0]
szDir= C:\Program Files (x86)\Kodak\Capture Pro
Result=1
[{3C08FCA5-C302-4538-BBFB-E2520A6292A3}-AskDestPath-0]
Result=1
szPath= C:\Users\Public\Documents\KCS Pro
[{3C08FCA5-C302-4538-BBFB-E2520A6292A3}-WorkStation ID-0]
WorkStationID= 1
WorkStationName= Capture_1
Result=1
[{3C08FCA5-C302-4538-BBFB-E2520A6292A3}-AskDestPath-1]
Result=1
szPath= C:\ScanPro\
[{3C08FCA5-C302-4538-BBFB-E2520A6292A3}-AskDestPath-2]
Result=1
szPath= C:\BatchesPro\
[{3C08FCA5-C302-4538-BBFB-E2520A6292A3}-SdShowInfoList-0]
Result=1
[{3C08FCA5-C302-4538-BBFB-E2520A6292A3}-SdStartCopy2-0]
Result=1
[Application]
Name=Kodak Capture Pro Software
Version=5.9.0
Company=Kodak Alaris Inc.
Lang=0409
[{B29FF64D-7D6F-431B-A8AF-C644309F08CA}-DlgOrder]
Count=0
[{43C0781F-CA07-47F1-8FD6-D7075AC588CA}-DlgOrder]
Count=0

C:\Program Files (x86)\Kodak\Capture Pro is the default destination path to where the application files will be installed. Modify this path if desired.

Example: “D:\Capture Pro”

C:\Users\Public\Documents\KCS Pro is the default destination path to where workgroup files such as Job and Page settings will be installed and can be shared by multiple users. Modify this path if desired, typically to a server.

Example: “W:\Multiuser\KCS PRO”

C:\ScanPro is the default destination path to where scanned images are sent. Modify this path if desired.

Example: “W:\Multiuser\KCP Images\”

C:\BatchesPro is the default destination path to where scanned images are sent. Modify this path if desired.

Example: “C:\My Pro Batches\”

11 - Stand-alone, Typical, Internet Access, No Legacy Hardware key, Trial

1. Enter a valid Registration ID on line "RegistrationID = ". A Registration ID is obtained by registering the Kodak Capture Pro Software. You may register by selecting Help > Register on the Capture Pro menu or by selecting the "Register" button on the License Manager tool, which may be downloaded from the Capture Pro download web site <http://www.kodakalaris.com/go/CaptureProDownload>
2. Enter the appropriate version number on line "Version= ".

[InstallShield Silent]

Version=v7.00

File=Response File

[File Transfer]

OverwrittenReadOnly=NoToAll

[{3C08FCA5-C302-4538-BBFB-E2520A6292A3}-DlgOrder]

Dlg0={3C08FCA5-C302-4538-BBFB-E2520A6292A3}-SdLicense2Rtf-0

Count=8

Dlg1={3C08FCA5-C302-4538-BBFB-E2520A6292A3}-WibuInstallDialog-0

Dlg2={3C08FCA5-C302-4538-BBFB-E2520A6292A3}-InstallOption-0

Dlg3={3C08FCA5-C302-4538-BBFB-E2520A6292A3}-Software Serial Number-0

Dlg4={3C08FCA5-C302-4538-BBFB-E2520A6292A3}-Product Registration-1

Dlg5={3C08FCA5-C302-4538-BBFB-E2520A6292A3}-SetupType2-0

Dlg6={3C08FCA5-C302-4538-BBFB-E2520A6292A3}-SdShowInfoList-0

Dlg7={3C08FCA5-C302-4538-BBFB-E2520A6292A3}-SdStartCopy2-0

[{3C08FCA5-C302-4538-BBFB-E2520A6292A3}-SdLicense2Rtf-0]

Result=1

[{3C08FCA5-C302-4538-BBFB-E2520A6292A3}-WibuInstallDialog-0]

Result=1

nWibuInstall=1

[{3C08FCA5-C302-4538-BBFB-E2520A6292A3}-InstallOption-0]

Result=1

Sel-0=0

[{3C08FCA5-C302-4538-BBFB-E2520A6292A3}-Software Serial Number-0]

SSN=''

Result=1

TrialEdition=1

[{3C08FCA5-C302-4538-BBFB-E2520A6292A3}-Product Registration-1]

RegistrationID= **KT12345678**

Result=1

[{3C08FCA5-C302-4538-BBFB-E2520A6292A3}-SetupType2-0]

Result=304

[{3C08FCA5-C302-4538-BBFB-E2520A6292A3}-SdShowInfoList-0]

Result=1

[{3C08FCA5-C302-4538-BBFB-E2520A6292A3}-SdStartCopy2-0]

Result=1

[Application]

Name=Kodak Capture Pro Software

Version= 5.9.0

Company=Kodak Alaris Inc.

Lang=0409

[{4E9DE7F6-8844-40D9-9C81-16C90AB77CB5}-DlgOrder]

Count=0

12 - Stand-alone, Advanced, Internet Access, No Legacy Hardware key, Trial

Modify the content as follows: (sample response is shown in red font)

1. Enter a valid Registration ID on line “RegistrationID = “. A Registration ID is obtained by registering the Kodak Capture Pro Software. You may register by selecting Help > Register on the Capture Pro menu or by selecting the “Register” button on the License Manager tool, which may be downloaded from the Capture Pro download web site <http://www.kodakalaris.com/go/CaptureProDownload>
2. The four destination paths, shown in blue font, may be modified. It is assumed that at least one of these paths will be changed, otherwise a Typical setup would suffice. For multiuser setups one would minimally edit the destination path of the workgroup files.
3. The Workstation ID maybe entered on line “WorkStationID=”. NOTE: The Workstation ID MUST be unique for each workstation using the shared workgroup.
4. The Workstation name maybe entered on line “WorkStationName=”. NOTE: The Workstation ID MUST be unique for each workstation using the shared workgroup.
5. Enter the appropriate version number on line “Version= “.

[InstallShield Silent]

Version=v7.00

File=Response File

[File Transfer]

OverwrittenReadOnly=NoToAll

[{3C08FCA5-C302-4538-BBFB-E2520A6292A3}-DlgOrder]

Dlg0={3C08FCA5-C302-4538-BBFB-E2520A6292A3}-SdLicense2Rtf-0

Count=13

Dlg1={3C08FCA5-C302-4538-BBFB-E2520A6292A3}-WibuInstallDialog-0

Dlg2={3C08FCA5-C302-4538-BBFB-E2520A6292A3}-InstallOption-0

Dlg3={3C08FCA5-C302-4538-BBFB-E2520A6292A3}-Software Serial Number-0

Dlg4={3C08FCA5-C302-4538-BBFB-E2520A6292A3}-Product Registration-1

Dlg5={3C08FCA5-C302-4538-BBFB-E2520A6292A3}-SetupType2-0

Dlg6={3C08FCA5-C302-4538-BBFB-E2520A6292A3}-SdAskDestPath2-0

Dlg7={3C08FCA5-C302-4538-BBFB-E2520A6292A3}-AskDestPath-0

Dlg8={3C08FCA5-C302-4538-BBFB-E2520A6292A3}-WorkStation ID-0

Dlg9={3C08FCA5-C302-4538-BBFB-E2520A6292A3}-AskDestPath-1

Dlg10={3C08FCA5-C302-4538-BBFB-E2520A6292A3}-AskDestPath-2

Dlg11={3C08FCA5-C302-4538-BBFB-E2520A6292A3}-SdShowInfoList-0

Dlg12={3C08FCA5-C302-4538-BBFB-E2520A6292A3}-SdStartCopy2-0

[{3C08FCA5-C302-4538-BBFB-E2520A6292A3}-SdLicense2Rtf-0]

Result=1

[{3C08FCA5-C302-4538-BBFB-E2520A6292A3}-WibuInstallDialog-0]

Result=1
nWibuInstall=1
[{{3C08FCA5-C302-4538-BBFB-E2520A6292A3}}-InstallOption-0]
Result=1
Sel-0=0
[{{3C08FCA5-C302-4538-BBFB-E2520A6292A3}}-Software Serial Number-0]
SSN=''

Result=1
TrialEdition=1
[{{3C08FCA5-C302-4538-BBFB-E2520A6292A3}}-Product Registration-1]
RegistrationID= **KT12345678**

Result=1
[{{3C08FCA5-C302-4538-BBFB-E2520A6292A3}}-SetupType2-0]
Result=303
[{{3C08FCA5-C302-4538-BBFB-E2520A6292A3}}-SdAskDestPath2-0]
szDir= [C:\Program Files \(x86\)\Kodak\Capture Pro](#)

Result=1
[{{3C08FCA5-C302-4538-BBFB-E2520A6292A3}}-AskDestPath-0]
Result=1
szPath= [C:\Users\Public\Documents\KCS Pro](#)
[{{3C08FCA5-C302-4538-BBFB-E2520A6292A3}}-WorkStation ID-0]
WorkStationID=**1**
WorkStationName=**Capture_1**

Result=1
[{{3C08FCA5-C302-4538-BBFB-E2520A6292A3}}-AskDestPath-1]
Result=1
szPath= [C:\ScanPro\](#)
[{{3C08FCA5-C302-4538-BBFB-E2520A6292A3}}-AskDestPath-2]
Result=1
szPath= [C:\BatchesPro\](#)
[{{3C08FCA5-C302-4538-BBFB-E2520A6292A3}}-SdShowInfoList-0]
Result=1
[{{3C08FCA5-C302-4538-BBFB-E2520A6292A3}}-SdStartCopy2-0]
Result=1
[Application]
Name=Kodak Capture Pro Software
Version=**5.9.0**
Company=Kodak Alaris Inc.
Lang=0409

[[479926F8-FCFD-4E41-97E4-787928558DF6]-DlgOrder]
Count=0

C:\Program Files (x86)\Kodak\Capture Pro is the default destination path to where the application files will be installed. Modify this path if desired.

Example: "D:\Capture Pro"

C:\Users\Public\Documents\KCS Pro is the default destination path to where workgroup files such as Job and Page settings will be installed and can be shared by multiple users. Modify this path if desired, typically to a server.

Example: "W:\Multiuser\KCS PRO"

C:\ScanPro is the default destination path to where scanned images are sent. Modify this path if desired.

Example: "W:\Multiuser\KCP Images\"

C:\BatchesPro is the default destination path to where scanned images are sent. Modify this path if desired.

Example: "C:\My Pro Batches\"

13 – Client, Typical, No Legacy Hardware key

Modify the content as follows: (sample response is shown in red font)

1. Enter the path to the Server Map XML file on the line “szPath=”
2. Enter the appropriate version number on line “Version= “.

```
[InstallShield Silent]
Version=v7.00
File=Response File
[File Transfer]
OverwrittenReadOnly=NoToAll
[{{3C08FCA5-C302-4538-BBFB-E2520A6292A3}}-DlgOrder]
Dlg0={{3C08FCA5-C302-4538-BBFB-E2520A6292A3}}-SdLicense2Rtf-0
Count=7
Dlg1={{3C08FCA5-C302-4538-BBFB-E2520A6292A3}}-WibuInstallDialog-0
Dlg2={{3C08FCA5-C302-4538-BBFB-E2520A6292A3}}-InstallOption-0
Dlg3={{3C08FCA5-C302-4538-BBFB-E2520A6292A3}}-AskPath-0
Dlg4={{3C08FCA5-C302-4538-BBFB-E2520A6292A3}}-SetupType2-0
Dlg5={{3C08FCA5-C302-4538-BBFB-E2520A6292A3}}-SdShowInfoList-0
Dlg6={{3C08FCA5-C302-4538-BBFB-E2520A6292A3}}-SdStartCopy2-0
[{{3C08FCA5-C302-4538-BBFB-E2520A6292A3}}-SdLicense2Rtf-0]
Result=1
[{{3C08FCA5-C302-4538-BBFB-E2520A6292A3}}-WibuInstallDialog-0]
Result=1
nWibuInstall=1
[{{3C08FCA5-C302-4538-BBFB-E2520A6292A3}}-InstallOption-0]
Result=1
Sel-0=1
[{{3C08FCA5-C302-4538-BBFB-E2520A6292A3}}-AskPath-0]
szPath=. \KCS\ServerMap.xml
Result=1
[{{3C08FCA5-C302-4538-BBFB-E2520A6292A3}}-SetupType2-0]
Result=304
[{{3C08FCA5-C302-4538-BBFB-E2520A6292A3}}-SdShowInfoList-0]
Result=1
[{{3C08FCA5-C302-4538-BBFB-E2520A6292A3}}-SdStartCopy2-0]
Result=1
```

[Application]

Name=Kodak Capture Pro Software

Version=5.9.0

Company=Kodak Alaris Inc.

Lang=0409

[{4E9DE7F6-8844-40D9-9C81-16C90AB77CB5}-D]gOrder]

Count=0

14 - Client, Typical, Internet Access, Legacy Hardware key

This install would typically be used to “upgrade” a version 3.1 or earlier installation that is using a USB hardware key. You must first uninstall any earlier version of Kodak Capture Pro Software. The hardware key must be plugged in when the silent installer is run.

Modify the content as follows: (sample response is shown in red font)

1. Enter the path to the Server Map XML file on the line “szPath=”
2. Enter a valid Registration ID on line “RegistrationID =. A Registration ID is obtained by registering the Kodak Capture Pro Software. You may register by selecting Help > Register on the Capture Pro menu or by selecting the “Register” button on the License Manager tool, which may be downloaded from the Capture Pro download web site <http://www.kodakalaris.com/go/CaptureProDownload>
3. Enter the appropriate version number on line “Version= “.

```
[InstallShield Silent]
Version=v7.00
File=Response File
[File Transfer]
OverwrittenReadOnly=NoToAll
[{{3C08FCA5-C302-4538-BBFB-E2520A6292A3}}-DlgOrder]
Dlg0={{3C08FCA5-C302-4538-BBFB-E2520A6292A3}}-SdLicense2Rtf-0
Count=8
Dlg1={{3C08FCA5-C302-4538-BBFB-E2520A6292A3}}-WibuInstallDialog-0
Dlg2={{3C08FCA5-C302-4538-BBFB-E2520A6292A3}}-InstallOption-0
Dlg3={{3C08FCA5-C302-4538-BBFB-E2520A6292A3}}-AskPath-0
Dlg4={{3C08FCA5-C302-4538-BBFB-E2520A6292A3}}-Product Registration-1
Dlg5={{3C08FCA5-C302-4538-BBFB-E2520A6292A3}}-SetupType2-0
Dlg6={{3C08FCA5-C302-4538-BBFB-E2520A6292A3}}-SdShowInfoList-0
Dlg7={{3C08FCA5-C302-4538-BBFB-E2520A6292A3}}-SdStartCopy2-0
[{{3C08FCA5-C302-4538-BBFB-E2520A6292A3}}-SdLicense2Rtf-0]
Result=1
[{{3C08FCA5-C302-4538-BBFB-E2520A6292A3}}-WibuInstallDialog-0]
Result=1
nWibuInstall=2
[{{3C08FCA5-C302-4538-BBFB-E2520A6292A3}}-InstallOption-0]
Result=1
Sel-0=1
[{{3C08FCA5-C302-4538-BBFB-E2520A6292A3}}-AskPath-0]
```

szPath=.\KCSServerMap.xml

Result=1

[{3C08FCA5-C302-4538-BBFB-E2520A6292A3}-Product Registration-1]

RegistrationID= KC12345678

Result=1

[{3C08FCA5-C302-4538-BBFB-E2520A6292A3}-SetupType2-0]

Result=304

[{3C08FCA5-C302-4538-BBFB-E2520A6292A3}-SdShowInfoList-0]

Result=1

[{3C08FCA5-C302-4538-BBFB-E2520A6292A3}-SdStartCopy2-0]

Result=1

[Application]

Name=Kodak Capture Pro Software

Version=5.9.0

Company=Kodak Alaris Inc.

Lang=0409

[{C4EAEDA1-F205-4372-91EE-8615CB83A5D5}-DlgOrder]

Count=0

15 - Client, Typical, No Internet Access, Legacy Hardware key

Modify the content as follows: (sample response is shown in red font)

1. Enter the path to the Server Map XML file on the line “szPath=”
2. Enter a valid Registration ID on line “RegistrationID =. A Registration ID is obtained by registering the Kodak Capture Pro Software. You may register by selecting Help > Register on the Capture Pro menu or by selecting the “Register” button on the License Manager tool, which may be downloaded from the Capture Pro download web site <http://www.kodakalaris.com/go/CaptureProDownload>
3. Enter the path of the folder, where you would like the license request file to be stored, on line “Request Folder=”. The license request file is a XML file that may be used to request a license from the Kodak Alaris license server, using a computer with internet access. There are two methods that may be used to create a request file and retrieve a license from the Kodak Alaris license server.
 - a. Method 1
 - i. Run the silent installer. If a valid license response XML file is not found at the location specified by “Response Path =” a license request file will be created at the location specified by “Request Folder=”.
 - ii. Move the license request file to a computer with internet access.
 - iii. Install and run the License Manager tool on this computer.
 - iv. On the “Request License” tab select “Upload Request”. Browse to the license request file you moved to this computer and select “Upload”.
 - v. Move the license response file returned by the Kodak Alaris license server (same location as the license request file) to the workstation without internet access.
 - vi. Continue with Step 4.
 - b. Method 2
 - i. Install and run the License Manager tool on the workstation where you wish to install Capture Pro.
 - ii. On the “Request License” tab select “Request License”.
 - iii. Select a location for the license request file and select “Request”.
 - iv. Move the license request file to a computer with internet access.
 - v. Install and run the License Manager tool on this computer.
 - vi. On the “Request License” tab select “Upload Request”. Browse to the license request file you moved to this computer and select “Upload”.
 - vii. Move the license response file returned by the Kodak Alaris license server (same location as the license request file) to the workstation without internet access.
 - viii. Continue with Step 4.
4. Enter the path and name of the license response file on line “Response Path=”. The license response file is a XML file returned by the Kodak Alaris license server and contains a license for the specific Software Serial number.
5. Enter the appropriate version number on line “Version= “.

[InstallShield Silent]

Version=v7.00

File=Response File
[File Transfer]
OverwrittenReadOnly=NoToAll
[{{3C08FCA5-C302-4538-BBFB-E2520A6292A3}}-DlgOrder]
Dlg0={{3C08FCA5-C302-4538-BBFB-E2520A6292A3}}-SdLicense2Rtf-0
Count=11
Dlg1={{3C08FCA5-C302-4538-BBFB-E2520A6292A3}}-WibuInstallDialog-0
Dlg2={{3C08FCA5-C302-4538-BBFB-E2520A6292A3}}-InstallOption-0
Dlg3={{3C08FCA5-C302-4538-BBFB-E2520A6292A3}}-AskPath-0
Dlg4={{3C08FCA5-C302-4538-BBFB-E2520A6292A3}}-Product Registration-1
Dlg5={{3C08FCA5-C302-4538-BBFB-E2520A6292A3}}-License Request-2
Dlg6={{3C08FCA5-C302-4538-BBFB-E2520A6292A3}}-SdDisplayTopics-0
Dlg7={{3C08FCA5-C302-4538-BBFB-E2520A6292A3}}-License Response-3
Dlg8={{3C08FCA5-C302-4538-BBFB-E2520A6292A3}}-SetupType2-0
Dlg9={{3C08FCA5-C302-4538-BBFB-E2520A6292A3}}-SdShowInfoList-0
Dlg10={{3C08FCA5-C302-4538-BBFB-E2520A6292A3}}-SdStartCopy2-0
[{{3C08FCA5-C302-4538-BBFB-E2520A6292A3}}-SdLicense2Rtf-0]
Result=1
[{{3C08FCA5-C302-4538-BBFB-E2520A6292A3}}-WibuInstallDialog-0]
Result=1
nWibuInstall=2
[{{3C08FCA5-C302-4538-BBFB-E2520A6292A3}}-InstallOption-0]
Result=1
Sel-0=1
[{{3C08FCA5-C302-4538-BBFB-E2520A6292A3}}-AskPath-0]
szPath=.\\KCSServerMap.xml
Result=1
[{{3C08FCA5-C302-4538-BBFB-E2520A6292A3}}-Product Registration-1]
RegistrationID= KC12345678
Result=1
[{{3C08FCA5-C302-4538-BBFB-E2520A6292A3}}-License Request-2]
Request Folder= C:\\KCP Silent Install\\
Result=1
[{{3C08FCA5-C302-4538-BBFB-E2520A6292A3}}-SdDisplayTopics-0]
Result=1
[{{3C08FCA5-C302-4538-BBFB-E2520A6292A3}}-License Response-3]
Response Path= C:\\KCP Silent Install\\ACP1234567890123456_Response.xml
Result=1
[{{3C08FCA5-C302-4538-BBFB-E2520A6292A3}}-SetupType2-0]

Result=304

[{3C08FCA5-C302-4538-BBFB-E2520A6292A3}-SdShowInfoList-0]

Result=1

[{3C08FCA5-C302-4538-BBFB-E2520A6292A3}-SdStartCopy2-0]

Result=1

[Application]

Name=Kodak Capture Pro Software

Version=5.9.0

Company=Kodak Alaris Inc.

Lang=0409

[{B8814AD4-04A1-46F3-A034-492AB78CFDEB}-DlgOrder]

Count=0

16 - Client, Advanced, No Legacy Hardware key

Modify the content as follows: (sample response is shown in red font)

1. Enter the path to the Server Map XML file on the line “szPath=”
2. The four destination paths, shown in blue font, may be modified. It is assumed that at least one of these paths will be changed, otherwise a Typical setup would suffice. For multiuser setups one would minimally edit the destination path of the workgroup files.
3. The Workstation ID maybe entered on line “WorkStationID=”. NOTE: The Workstation ID MUST be unique for each workstation using the shared workgroup.
4. The Workstation name maybe entered on line “WorkStationName=”. NOTE: The Workstation ID MUST be unique for each workstation using the shared workgroup.
5. Enter the appropriate version number on line “Version= “.

```
[InstallShield Silent]
```

```
Version=v7.00
```

```
File=Response File
```

```
[File Transfer]
```

```
OverwrittenReadOnly=NoToAll
```

```
[{3C08FCA5-C302-4538-BBFB-E2520A6292A3}-DlgOrder]
```

```
Dlg0={3C08FCA5-C302-4538-BBFB-E2520A6292A3}-SdLicense2Rtf-0
```

```
Count=12
```

```
Dlg1={3C08FCA5-C302-4538-BBFB-E2520A6292A3}-WibuInstallDialog-0
```

```
Dlg2={3C08FCA5-C302-4538-BBFB-E2520A6292A3}-InstallOption-0
```

```
Dlg3={3C08FCA5-C302-4538-BBFB-E2520A6292A3}-AskPath-0
```

```
Dlg4={3C08FCA5-C302-4538-BBFB-E2520A6292A3}-SetupType2-0
```

```
Dlg5={3C08FCA5-C302-4538-BBFB-E2520A6292A3}-SdAskDestPath2-0
```

```
Dlg6={3C08FCA5-C302-4538-BBFB-E2520A6292A3}-AskDestPath-0
```

```
Dlg7={3C08FCA5-C302-4538-BBFB-E2520A6292A3}-WorkStation ID-0
```

```
Dlg8={3C08FCA5-C302-4538-BBFB-E2520A6292A3}-AskDestPath-1
```

```
Dlg9={3C08FCA5-C302-4538-BBFB-E2520A6292A3}-AskDestPath-2
```

```
Dlg10={3C08FCA5-C302-4538-BBFB-E2520A6292A3}-SdShowInfoList-0
```

```
Dlg11={3C08FCA5-C302-4538-BBFB-E2520A6292A3}-SdStartCopy2-0
```

```
[{3C08FCA5-C302-4538-BBFB-E2520A6292A3}-SdLicense2Rtf-0]
```

```
Result=1
```

```
[{3C08FCA5-C302-4538-BBFB-E2520A6292A3}-WibuInstallDialog-0]
```

```
Result=1
```

```
nWibuInstall=1
```

[{3C08FCA5-C302-4538-BBFB-E2520A6292A3}-InstallOption-0]
Result=1
Sel-0=1
[{{3C08FCA5-C302-4538-BBFB-E2520A6292A3}}-AskPath-0]
szPath=.\\KCS\\ServerMap.xml
Result=1
[{{3C08FCA5-C302-4538-BBFB-E2520A6292A3}}-SetupType2-0]
Result=303
[{{3C08FCA5-C302-4538-BBFB-E2520A6292A3}}-SdAskDestPath2-0]
szDir= C:\\Program Files (x86)\\Kodak\\Capture Pro
Result=1
[{{3C08FCA5-C302-4538-BBFB-E2520A6292A3}}-AskDestPath-0]
Result=1
szPath= C:\\Users\\Public\\Documents\\KCS Pro
[{{3C08FCA5-C302-4538-BBFB-E2520A6292A3}}-WorkStation ID-0]
WorkStationID=1
WorkStationName=Capture_1
Result=1
[{{3C08FCA5-C302-4538-BBFB-E2520A6292A3}}-AskDestPath-1]
Result=1
szPath= C:\\ScanPro\\
[{{3C08FCA5-C302-4538-BBFB-E2520A6292A3}}-AskDestPath-2]
Result=1
szPath= C:\\BatchesPro\\
[{{3C08FCA5-C302-4538-BBFB-E2520A6292A3}}-SdShowInfoList-0]
Result=1
[{{3C08FCA5-C302-4538-BBFB-E2520A6292A3}}-SdStartCopy2-0]
Result=1
[Application]
Name=Kodak Capture Pro Software
Version=5.9.0
Company=Kodak Alaris Inc.
Lang=0409
[{{479926F8-FCFD-4E41-97E4-787928558DF6}}-DlgOrder]
Count=0

C:\\Program Files (x86)\\Kodak\\Capture Pro is the default destination path to where the application files will be installed. Modify this path if desired.

Example: "D:\\Capture Pro"

C:\Users\Public\Documents\KCS Pro is the default destination path to where workgroup files such as Job and Page settings will be installed and can be shared by multiple users. Modify this path if desired, typically to a server.

Example: “W:\Multiuser\KCS PRO”

C:\ScanPro is the default destination path to where scanned images are sent. Modify this path if desired.

Example: “W:\Multiuser\KCP Images\”

C:\BatchesPro is the default destination path to where scanned images are sent. Modify this path if desired.

Example: “C:\My Pro Batches\”

17 - Client, Advanced, Internet Access, Legacy Hardware key

This install would typically be used to “upgrade” a version 3.1 or earlier installation that is using a USB hardware key. You must first uninstall any earlier version of Kodak Capture Pro Software. The hardware key must be plugged in when the silent installer is run.

Modify the content as follows: (sample response is shown in red font)

1. Enter the path to the Server Map XML file on the line “szPath=”
2. Enter a valid Registration ID on line “RegistrationID =”. A Registration ID is obtained by registering the Kodak Capture Pro Software. You may register by selecting Help > Register on the Capture Pro menu or by selecting the “Register” button on the License Manager tool, which may be downloaded from the Capture Pro download web site <http://www.kodakalaris.com/go/CaptureProDownload>
3. The four destination paths, shown in blue font, may be modified. It is assumed that at least one of these paths will be changed, otherwise a Typical setup would suffice. For multiuser setups one would minimally edit the destination path of the workgroup files.
4. The Workstation ID maybe entered on line “WorkStationID=”. NOTE: The Workstation ID MUST be unique for each workstation using the shared workgroup.
5. The Workstation name maybe entered on line “WorkStationName=”. NOTE: The Workstation ID MUST be unique for each workstation using the shared workgroup.
6. Enter the appropriate version number on line “Version= “.

[InstallShield Silent]

Version=v7.00

File=Response File

[File Transfer]

OverwrittenReadOnly=NoToAll

[{3C08FCA5-C302-4538-BBFB-E2520A6292A3}-DlgOrder]

Dlg0={3C08FCA5-C302-4538-BBFB-E2520A6292A3}-SdLicense2Rtf-0

Count=13

Dlg1={3C08FCA5-C302-4538-BBFB-E2520A6292A3}-WibuInstallDialog-0

Dlg2={3C08FCA5-C302-4538-BBFB-E2520A6292A3}-InstallOption-0

Dlg3={3C08FCA5-C302-4538-BBFB-E2520A6292A3}-AskPath-0

Dlg4={3C08FCA5-C302-4538-BBFB-E2520A6292A3}-Product Registration-1

Dlg5={3C08FCA5-C302-4538-BBFB-E2520A6292A3}-SetupType2-0

Dlg6={3C08FCA5-C302-4538-BBFB-E2520A6292A3}-SdAskDestPath2-0

Dlg7={3C08FCA5-C302-4538-BBFB-E2520A6292A3}-AskDestPath-0

Dlg8={3C08FCA5-C302-4538-BBFB-E2520A6292A3}-WorkStation ID-0

Dlg9={3C08FCA5-C302-4538-BBFB-E2520A6292A3}-AskDestPath-1

Dlg10={3C08FCA5-C302-4538-BBFB-E2520A6292A3}-AskDestPath-2

Dlg11={3C08FCA5-C302-4538-BBFB-E2520A6292A3}-SdShowInfoList-0

Dlg12={3C08FCA5-C302-4538-BBFB-E2520A6292A3}-SdStartCopy2-0
[{{3C08FCA5-C302-4538-BBFB-E2520A6292A3}-SdLicense2Rtf-0]
Result=1
[{{3C08FCA5-C302-4538-BBFB-E2520A6292A3}-WibuInstallDialog-0]
Result=1
nWibuInstall=2
[{{3C08FCA5-C302-4538-BBFB-E2520A6292A3}-InstallOption-0]
Result=1
Sel-0=1
[{{3C08FCA5-C302-4538-BBFB-E2520A6292A3}-AskPath-0]
szPath=.\\KCS\\ServerMap.xml
Result=1
[{{3C08FCA5-C302-4538-BBFB-E2520A6292A3}-Product Registration-1]
RegistrationID= KC12345678
Result=1
[{{3C08FCA5-C302-4538-BBFB-E2520A6292A3}-SetupType2-0]
Result=303
[{{3C08FCA5-C302-4538-BBFB-E2520A6292A3}-SdAskDestPath2-0]
szDir= C:\\Program Files (x86)\\Kodak\\Capture Pro
Result=1
[{{3C08FCA5-C302-4538-BBFB-E2520A6292A3}-AskDestPath-0]
Result=1
szPath= C:\\Users\\Public\\Documents\\KCS Pro
[{{3C08FCA5-C302-4538-BBFB-E2520A6292A3}-WorkStation ID-0]
WorkStationID=1
WorkStationName=Capture_1
Result=1
[{{3C08FCA5-C302-4538-BBFB-E2520A6292A3}-AskDestPath-1]
Result=1
szPath= C:\\ScanPro\\
[{{3C08FCA5-C302-4538-BBFB-E2520A6292A3}-AskDestPath-2]
Result=1
szPath= C:\\BatchesPro\\
[{{3C08FCA5-C302-4538-BBFB-E2520A6292A3}-SdShowInfoList-0]
Result=1
[{{3C08FCA5-C302-4538-BBFB-E2520A6292A3}-SdStartCopy2-0]
Result=1
[Application]
Name=Kodak Capture Pro Software

Version=**5.9.0**

Company=Kodak Alaris Inc.

Lang=0409

[{B8814AD4-04A1-46F3-A034-492AB78CFDEB}-DlgOrder]

Count=0

C:\Program Files (x86)\Kodak\Capture Pro is the default destination path to where the application files will be installed. Modify this path if desired.

Example: "D:\Capture Pro"

C:\Users\Public\Documents\KCS Pro is the default destination path to where workgroup files such as Job and Page settings will be installed and can be shared by multiple users. Modify this path if desired, typically to a server.

Example: "W:\Multiuser\KCS PRO"

C:\ScanPro is the default destination path to where scanned images are sent. Modify this path if desired.

Example: "W:\Multiuser\KCP Images\"

C:\BatchesPro is the default destination path to where scanned images are sent. Modify this path if desired.

Example: "C:\My Pro Batches\"

18 – Client, Advanced, No Internet Access, Legacy Hardware key

Modify the content as follows: (sample response is shown in red font)

1. Enter the path to the Server Map XML file on the line “szPath=”
2. Enter a valid Registration ID on line “RegistrationID =”. A Registration ID is obtained by registering the Kodak Capture Pro Software. You may register by selecting Help > Register on the Capture Pro menu or by selecting the “Register” button on the License Manager tool, which may be downloaded from the Capture Pro download web site <http://www.kodakalaris.com/go/CaptureProDownload>
3. Enter the path of the folder, where you would like the license request file to be stored, on line “Request Folder=”. The license request file is a XML file that may be used to request a license from the Kodak Alaris license server, using a computer with internet access. There are two methods that may be used to create a request file and retrieve a license from the Kodak Alaris license server.
 - a. Method 1
 - i. Run the silent installer. If a valid license response XML file is not found at the location specified by “Response Path =” a license request file will be created at the location specified by “Request Folder=”.
 - ii. Move the license request file to a computer with internet access.
 - iii. Install and run the License Manager tool on this computer.
 - iv. On the “Request License” tab select “Upload Request”. Browse to the license request file you moved to this computer and select “Upload”.
 - v. Move the license response file returned by the Kodak Alaris license server (same location as the license request file) to the workstation without internet access.
 - vi. Continue with Step 4.
 - b. Method 2
 - i. Install and run the License Manager tool on the workstation where you wish to install Capture Pro.
 - ii. On the “Request License” tab select “Request License”.
 - iii. Select a location for the license request file and select “Request”.
 - iv. Move the license request file to a computer with internet access.
 - v. Install and run the License Manager tool on this computer.
 - vi. On the “Request License” tab select “Upload Request”. Browse to the license request file you moved to this computer and select “Upload”.
 - vii. Move the license response file returned by the Kodak Alaris license server (same location as the license request file) to the workstation without internet access.
 - viii. Continue with Step 4.
4. Enter the path and name of the license response file on line “Response Path=”. The license response file is a XML file returned by the Kodak Alaris license server and contains a license for the specific Software Serial number.
5. The four destination paths, shown in blue font, may be modified. It is assumed that at least one of these paths will be changed, otherwise a Typical setup would suffice. For multiuser setups one would minimally edit the destination path of the workgroup files.
6. The Workstation ID maybe entered on line “WorkStationID=”. NOTE: The Workstation ID MUST be unique for each workstation using the shared workgroup.

7. The Workstation name may be entered on line “WorkStationName=”. NOTE: The Workstation ID MUST be unique for each workstation using the shared workgroup.
8. Enter the appropriate version number on line “Version= “.

[InstallShield Silent]

Version=v7.00

File=Response File

[File Transfer]

OverwrittenReadOnly=NoToAll

[{3C08FCA5-C302-4538-BBFB-E2520A6292A3}-DlgOrder]

Dlg0={3C08FCA5-C302-4538-BBFB-E2520A6292A3}-SdLicense2Rtf-0

Count=16

Dlg1={3C08FCA5-C302-4538-BBFB-E2520A6292A3}-WibuInstallDialog-0

Dlg2={3C08FCA5-C302-4538-BBFB-E2520A6292A3}-InstallOption-0

Dlg3={3C08FCA5-C302-4538-BBFB-E2520A6292A3}-AskPath-0

Dlg4={3C08FCA5-C302-4538-BBFB-E2520A6292A3}-Product Registration-1

Dlg5={3C08FCA5-C302-4538-BBFB-E2520A6292A3}-License Request-2

Dlg6={3C08FCA5-C302-4538-BBFB-E2520A6292A3}-SdDisplayTopics-0

Dlg7={3C08FCA5-C302-4538-BBFB-E2520A6292A3}-License Response-3

Dlg8={3C08FCA5-C302-4538-BBFB-E2520A6292A3}-SetupType2-0

Dlg9={3C08FCA5-C302-4538-BBFB-E2520A6292A3}-SdAskDestPath2-0

Dlg10={3C08FCA5-C302-4538-BBFB-E2520A6292A3}-AskDestPath-0

Dlg11={3C08FCA5-C302-4538-BBFB-E2520A6292A3}-WorkStation ID-0

Dlg12={3C08FCA5-C302-4538-BBFB-E2520A6292A3}-AskDestPath-1

Dlg13={3C08FCA5-C302-4538-BBFB-E2520A6292A3}-AskDestPath-2

Dlg14={3C08FCA5-C302-4538-BBFB-E2520A6292A3}-SdShowInfoList-0

Dlg15={3C08FCA5-C302-4538-BBFB-E2520A6292A3}-SdStartCopy2-0

[{3C08FCA5-C302-4538-BBFB-E2520A6292A3}-SdLicense2Rtf-0]

Result=1

[{3C08FCA5-C302-4538-BBFB-E2520A6292A3}-WibuInstallDialog-0]

Result=1

nWibuInstall=2

[{3C08FCA5-C302-4538-BBFB-E2520A6292A3}-InstallOption-0]

Result=1

Sel-0=1

[{3C08FCA5-C302-4538-BBFB-E2520A6292A3}-AskPath-0]

szPath=.\KCSSTServerMap.xml

Result=1

[{3C08FCA5-C302-4538-BBFB-E2520A6292A3}-Product Registration-1]

RegistrationID= KC12345678
Result=1
[{{3C08FCA5-C302-4538-BBFB-E2520A6292A3}}-License Request-2]
Request Folder= C:\KCP Silent Install\
Result=1
[{{3C08FCA5-C302-4538-BBFB-E2520A6292A3}}-SdDisplayTopics-0]
Result=1
[{{3C08FCA5-C302-4538-BBFB-E2520A6292A3}}-License Response-3]
Response Path= C:\KCP Silent Install\ACP1234567890123456_Response.xml
Result=1
[{{3C08FCA5-C302-4538-BBFB-E2520A6292A3}}-SetupType2-0]
Result=303
[{{3C08FCA5-C302-4538-BBFB-E2520A6292A3}}-SdAskDestPath2-0]
szDir= C:\Program Files (x86)\Kodak\Capture Pro
Result=1
[{{3C08FCA5-C302-4538-BBFB-E2520A6292A3}}-AskDestPath-0]
Result=1
szPath= C:\Users\Public\Documents\KCS Pro
[{{3C08FCA5-C302-4538-BBFB-E2520A6292A3}}-WorkStation ID-0]
WorkStationID=1
WorkStationName=Capture_1
Result=1
[{{3C08FCA5-C302-4538-BBFB-E2520A6292A3}}-AskDestPath-1]
Result=1
szPath= C:\ScanPro\
[{{3C08FCA5-C302-4538-BBFB-E2520A6292A3}}-AskDestPath-2]
Result=1
szPath= C:\BatchesPro\
[{{3C08FCA5-C302-4538-BBFB-E2520A6292A3}}-SdShowInfoList-0]
Result=1
[{{3C08FCA5-C302-4538-BBFB-E2520A6292A3}}-SdStartCopy2-0]
Result=1
[Application]
Name=Kodak Capture Pro Software
Version=5.9.0
Company=Kodak Alaris Inc.
Lang=0409
[{{B8814AD4-04A1-46F3-A034-492AB78CFDEB}}-DlgOrder]
Count=0

C:\Program Files (x86)\Kodak\Capture Pro is the default destination path to where the application files will be installed. Modify this path if desired.

Example: “D:\Capture Pro”

C:\Users\Public\Documents\KCS Pro is the default destination path to where workgroup files such as Job and Page settings will be installed and can be shared by multiple users. Modify this path if desired, typically to a server.

Example: “W:\Multiuser\KCS PRO”

C:\ScanPro is the default destination path to where scanned images are sent. Modify this path if desired.

Example: “W:\Multiuser\KCP Images\”

C:\BatchesPro is the default destination path to where scanned images are sent. Modify this path if desired.

Example: “C:\My Pro Batches\”

April 27, 2021